

BIBLE

Paper Toys



The Nativity Story

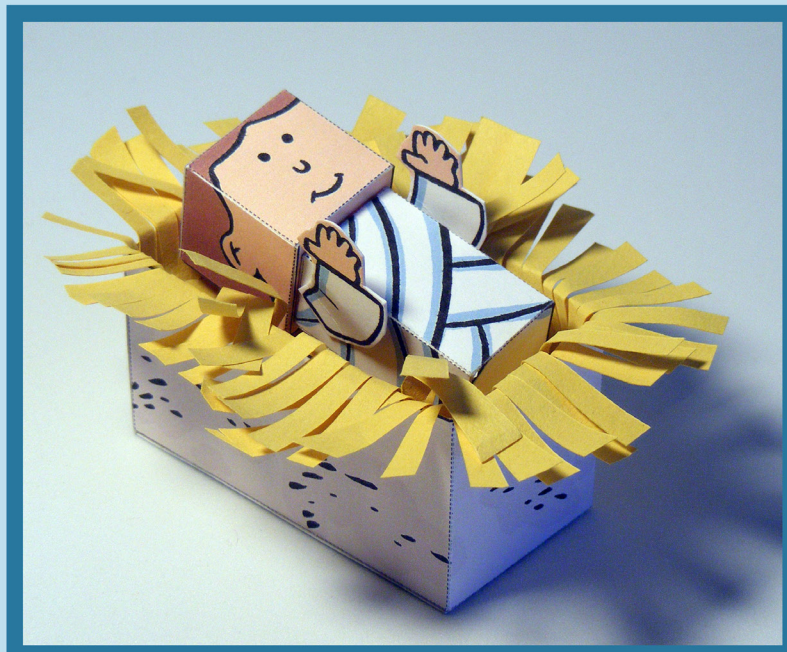
Book 1

Nativity Figures

Bible Paper Toys

The Nativity Story

You can read the story of the
first Christmas in
Matthew 1:18–25, 2:1–11 and
Luke 1:26–38, 2:1–20.



Model designed by Didier Martin.
Copyright © 2010 by Didier Martin
<http://jacques-mylittlehouse.blogspot.com/>

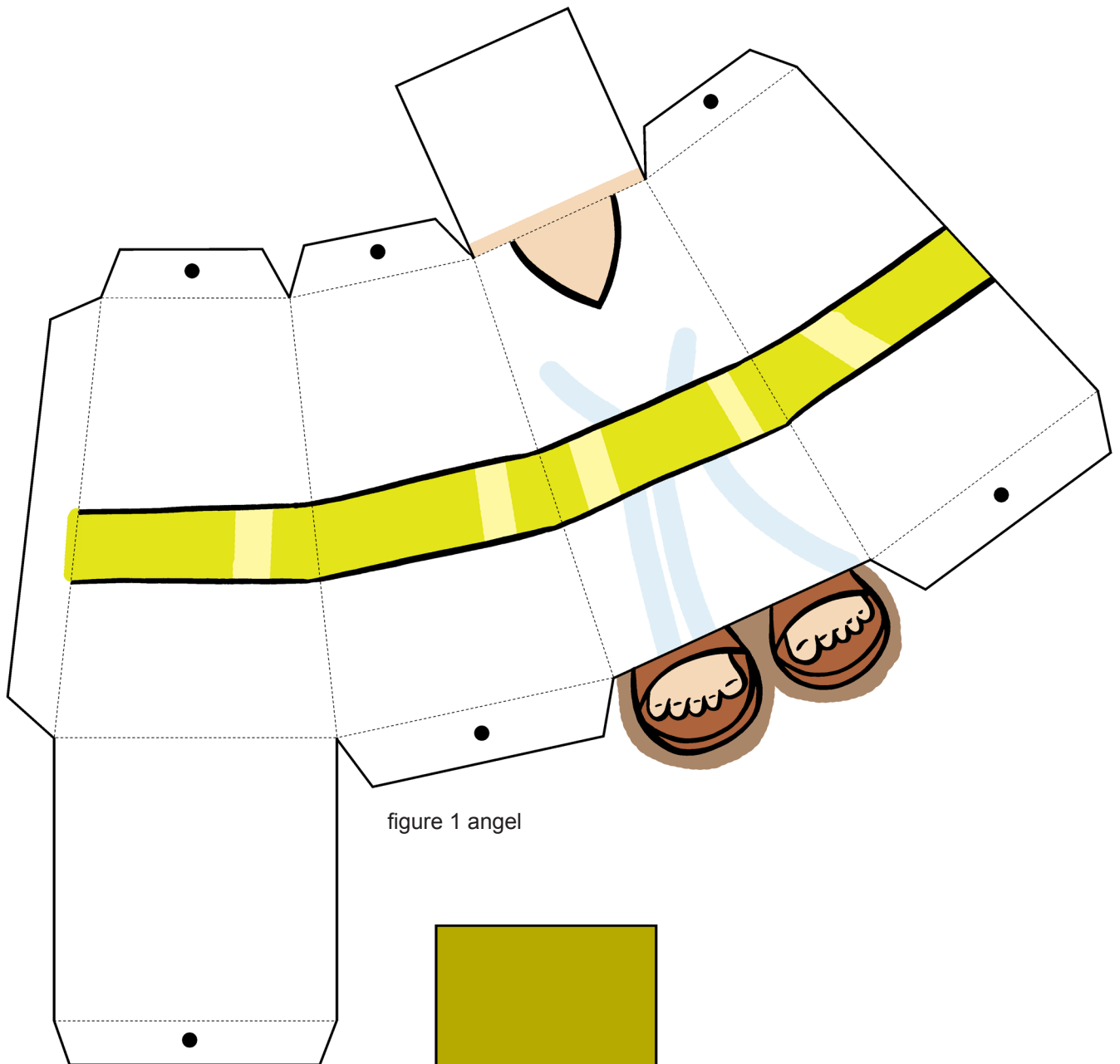


figure 1 angel

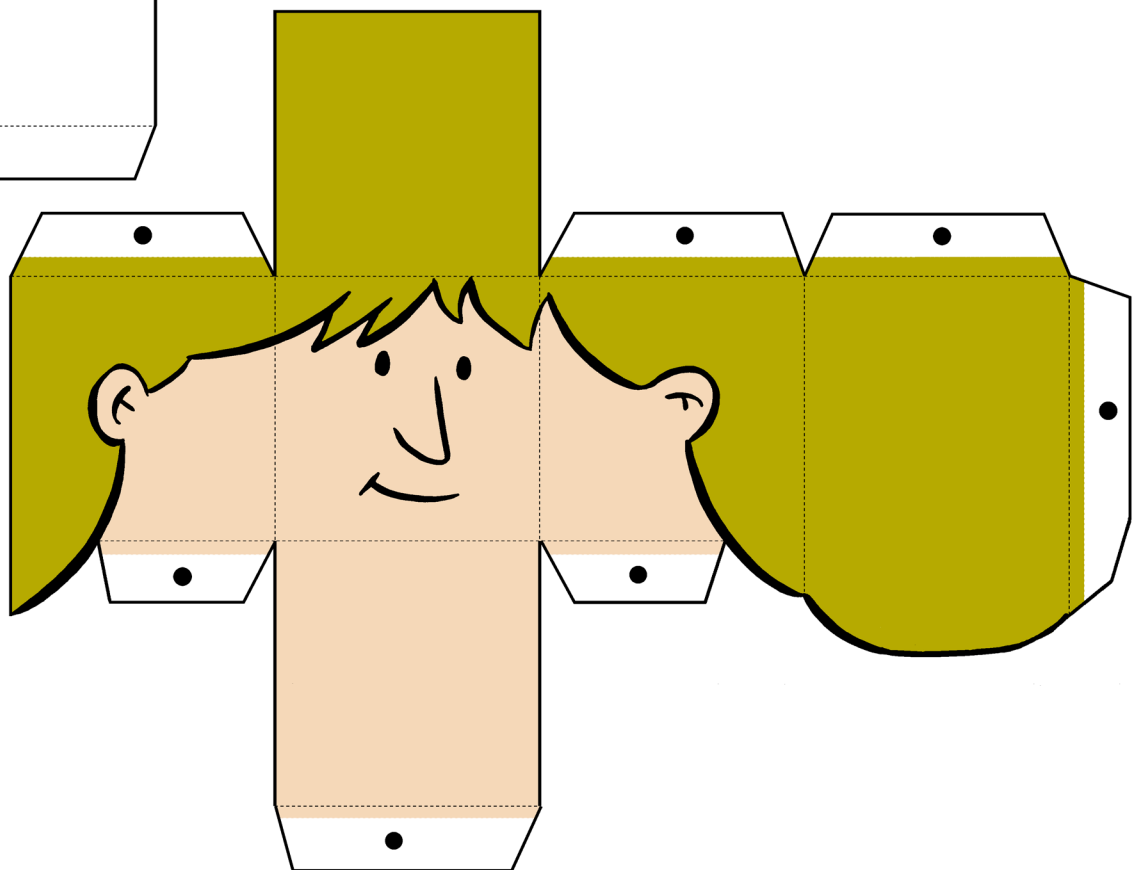


figure 1 angel

figure 1 angel

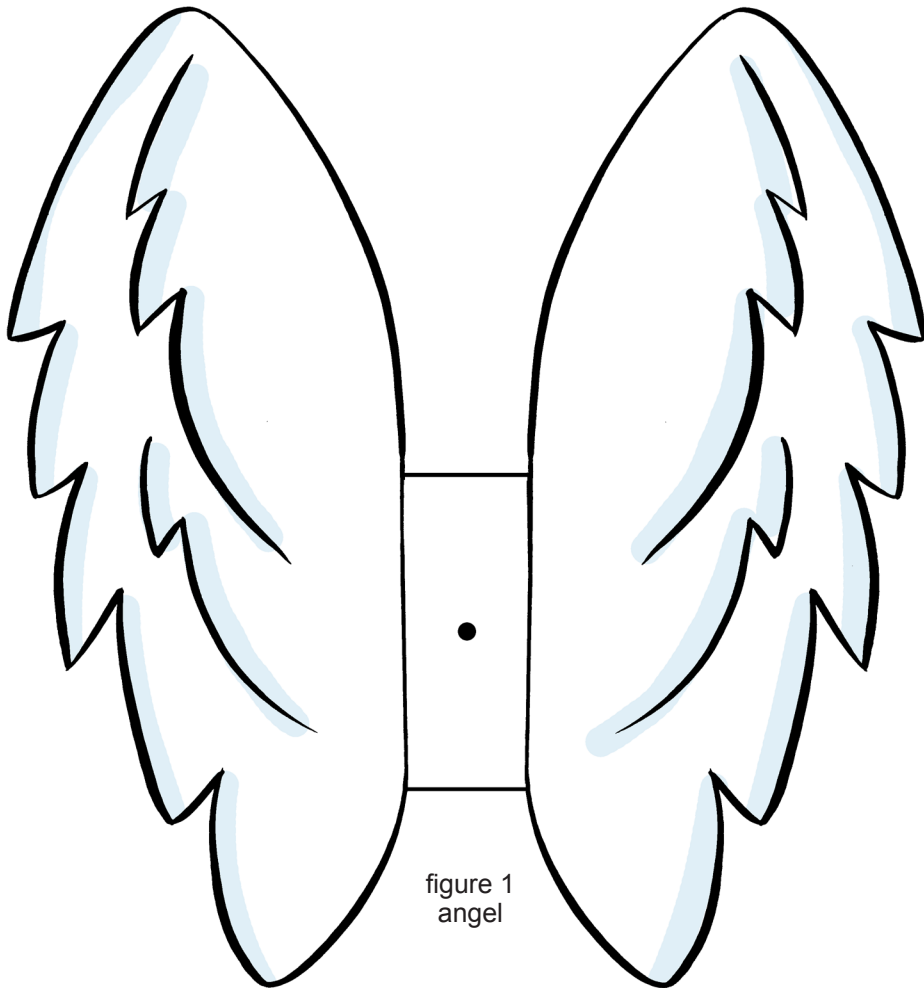
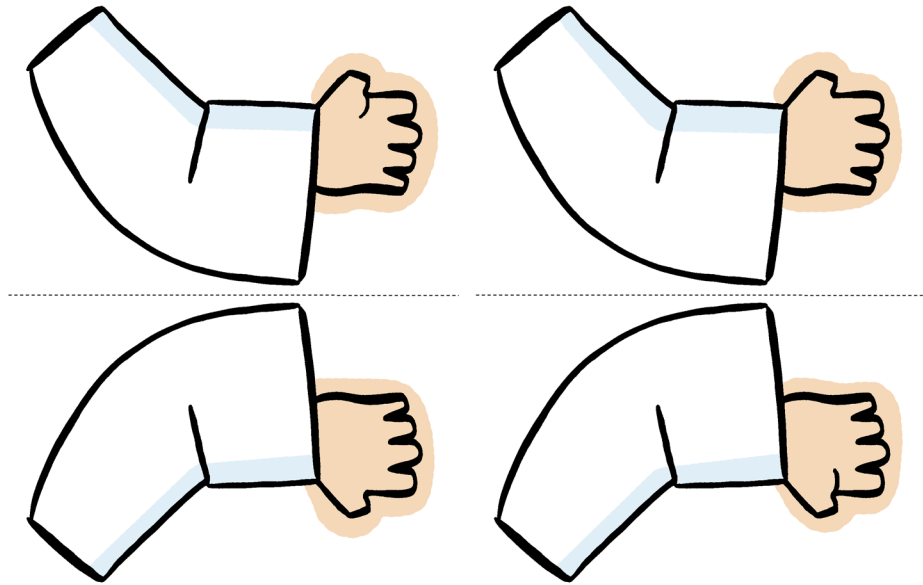


figure 1
angel

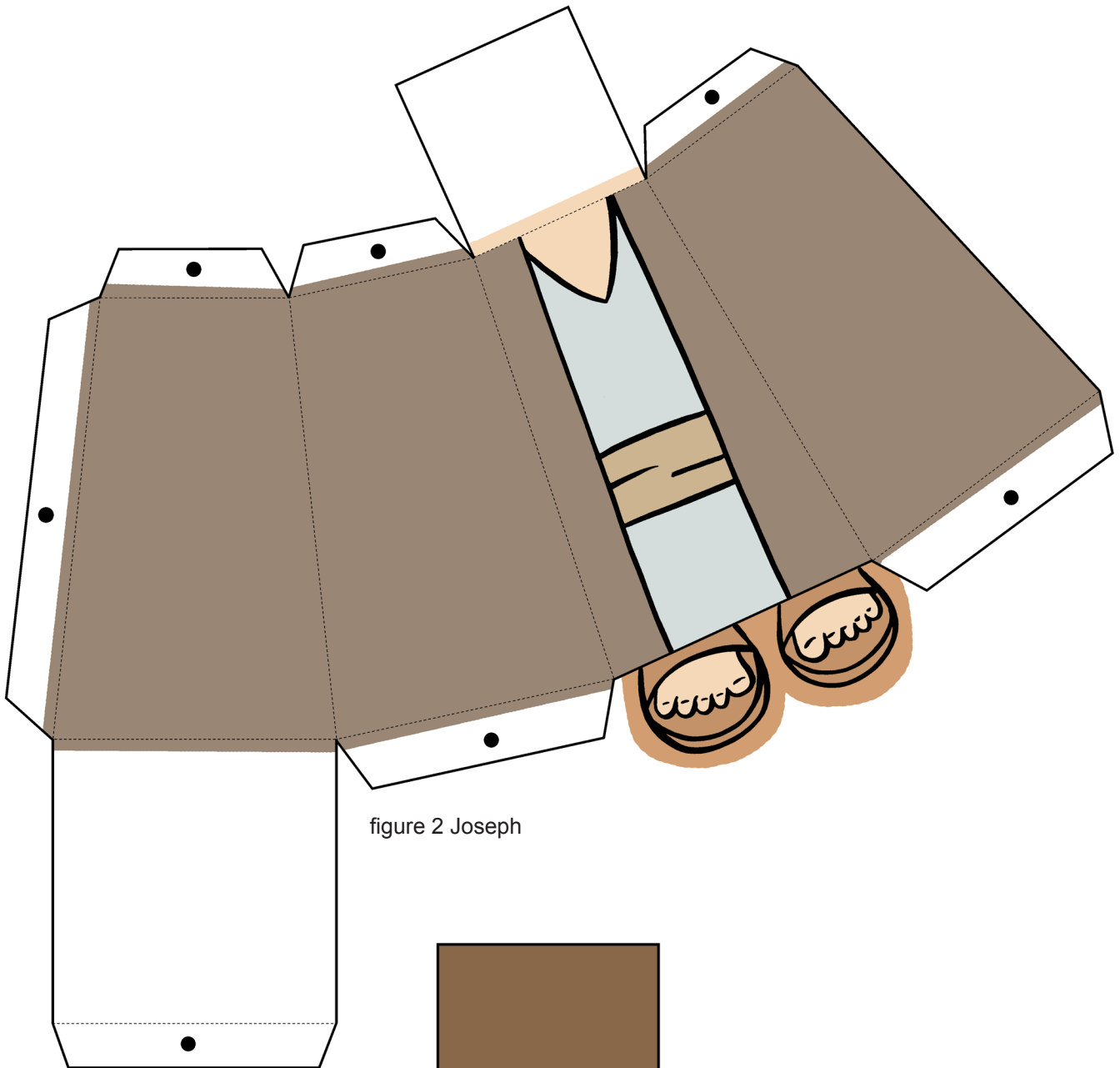


figure 2 Joseph

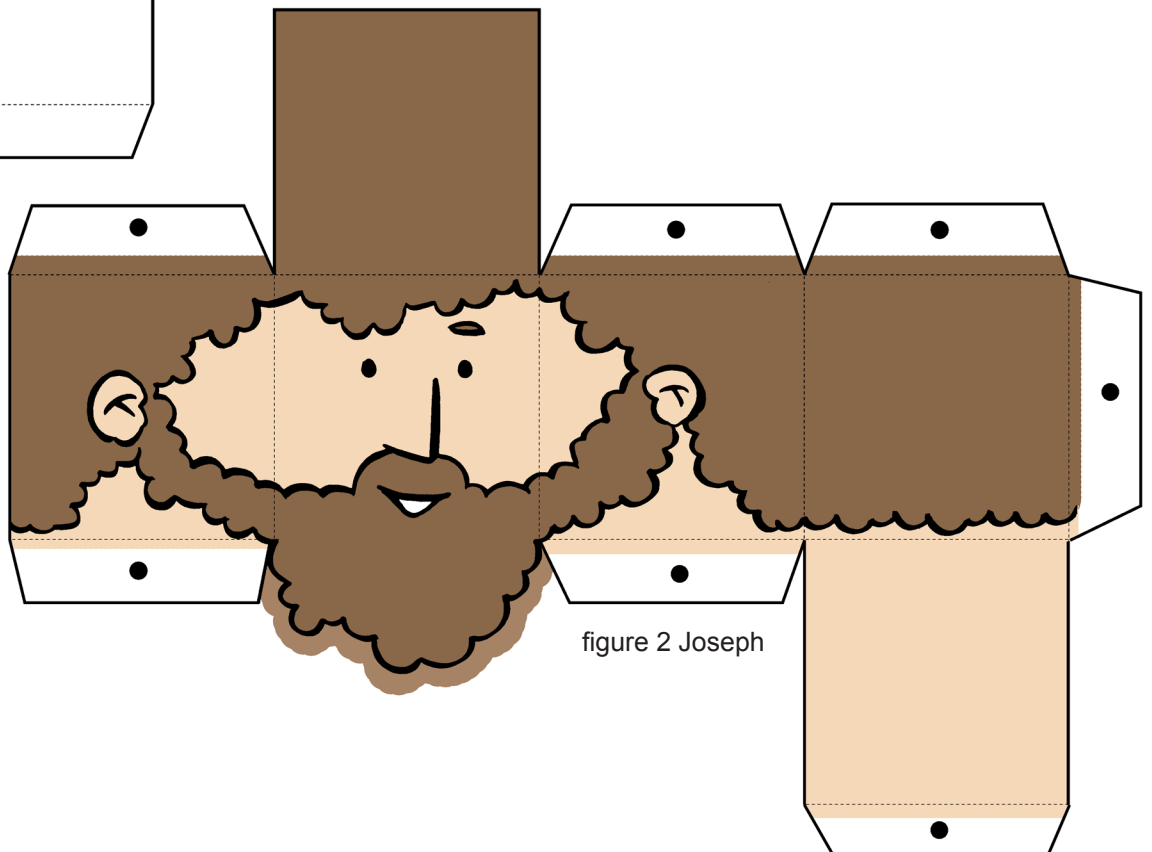


figure 2 Joseph

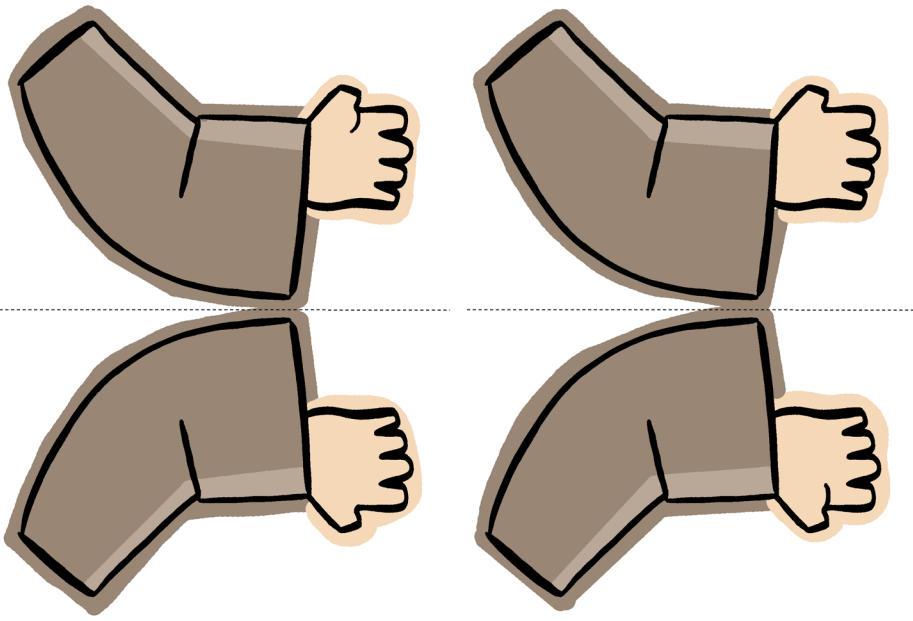


figure 2 Joseph

figure 5 manger

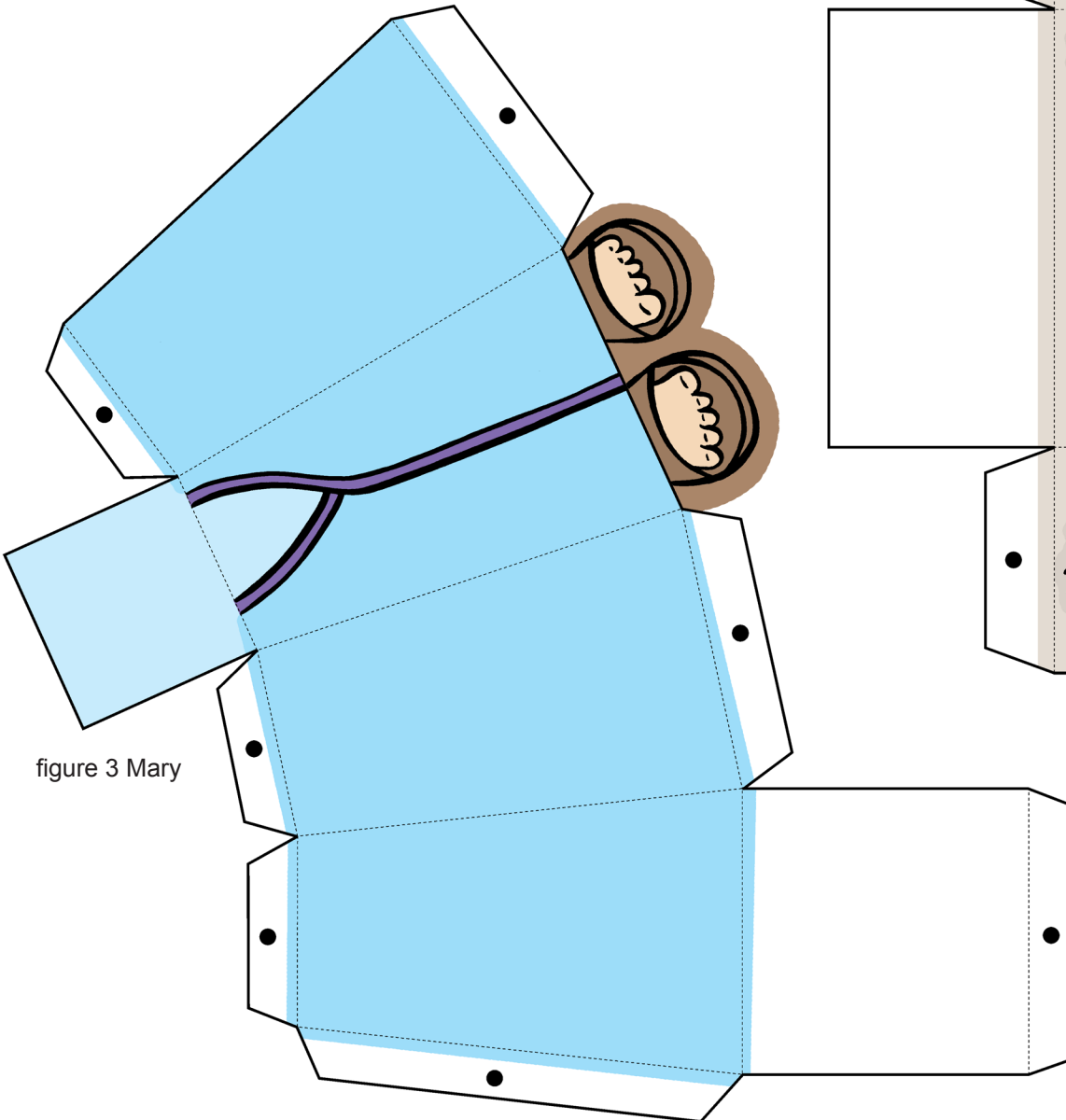
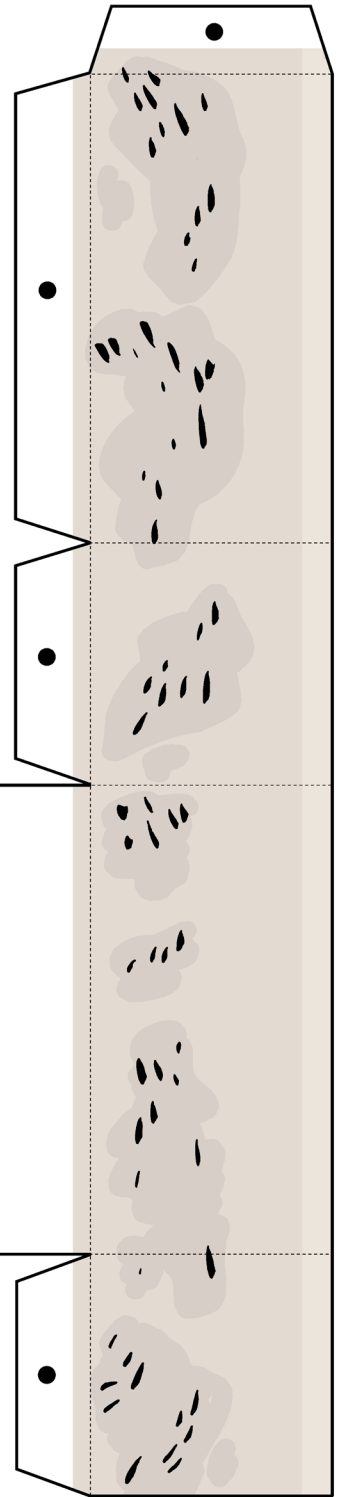


figure 3 Mary

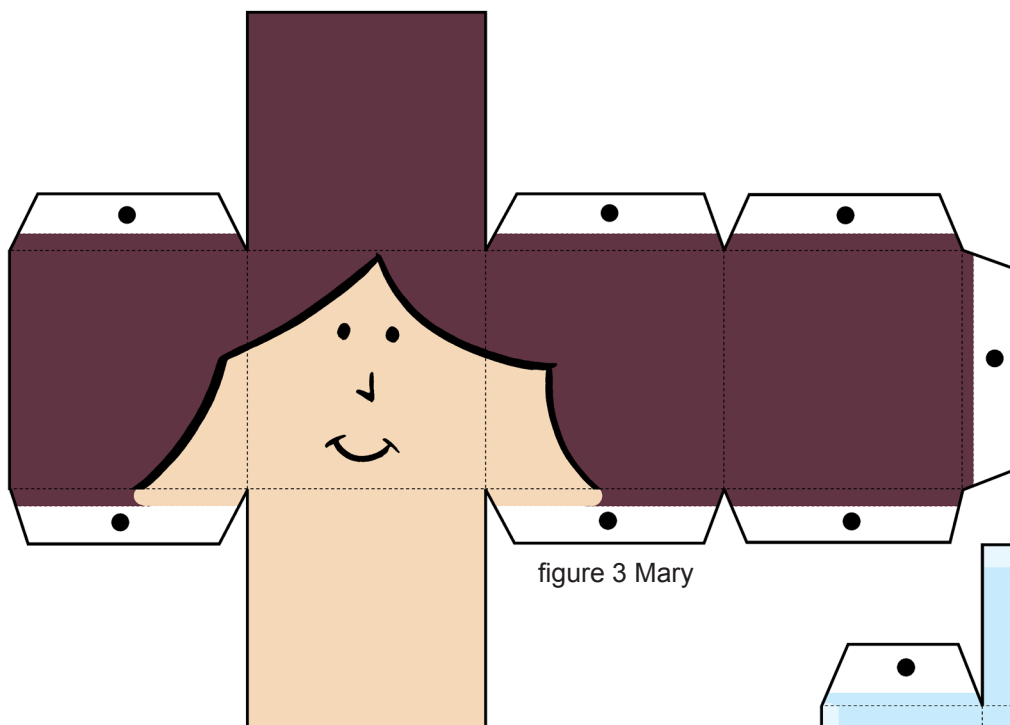


figure 3 Mary

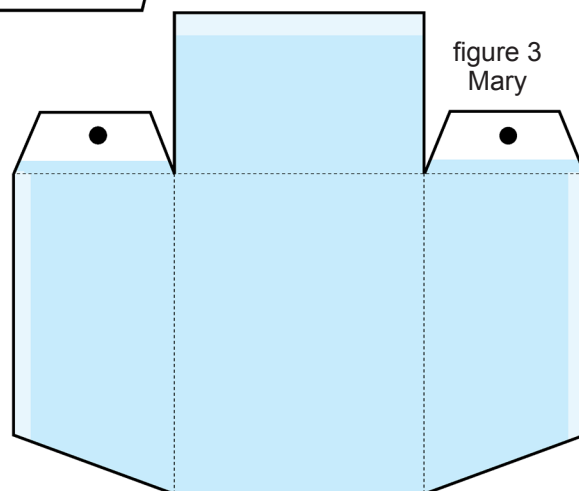


figure 3 Mary

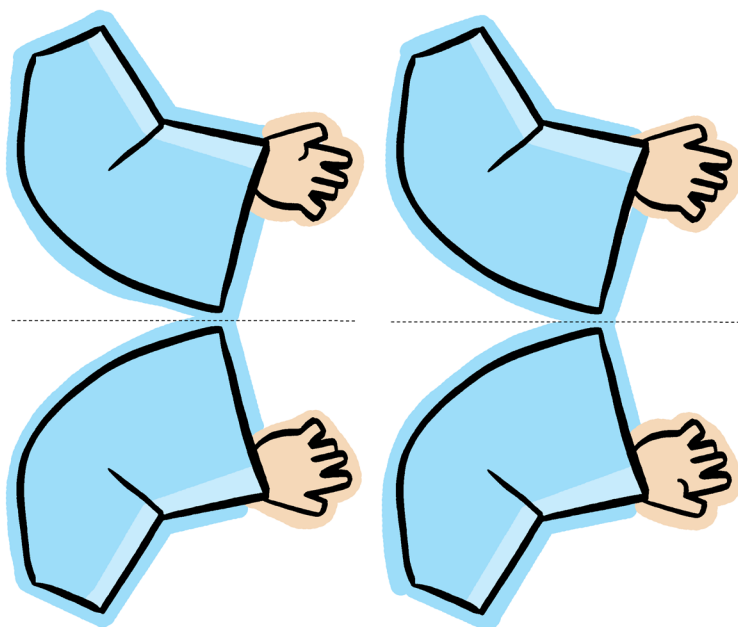


figure 3 Mary

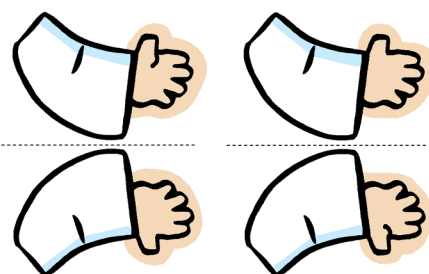


figure 4 baby Jesus

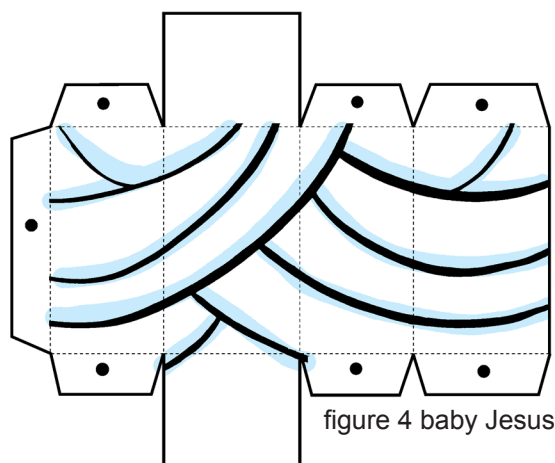


figure 4 baby Jesus

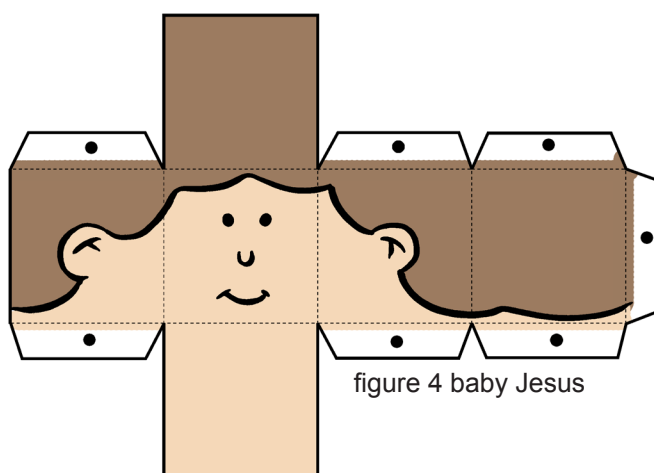


figure 4 baby Jesus

ASSEMBLY INSTRUCTIONS

Print pages 1 through 5 on cardstock and follow the assembly instructions. Take your time and make sure all the parts line up properly before gluing. Just like anything else, it takes practice to get each model exactly right. But you'll find that the more models you work on the easier they become.

Tools needed

- Small scissors. Small craft or manicure scissors work best.
- Hobby knife. Put in a sharp new blade, such as *X-acto* #10 or #11 for best results.
- Sturdy tweezers. Tweezers with rough edges or teeth will mar the surface of the pieces, so find a set with smooth edges.
- Straightedge or ruler. Preferably a metal one, to guide your knife in making a straight cut or score.
- Toothpicks or blunt dental tools for reaching into tiny corners and spreading drops of glue.
- White glue.
- Cutting surface. You can use a self-healing cutting mat, but a piece of cardboard will also work fine.
- "Dead" pen (no more ink) or blunt knife for scoring.

TIP: After cutting out the parts and folding the tabs, make sure the parts fit together before gluing them. Refer to the picture of the final model to see how the different parts fit together.



Cut lines



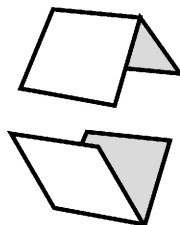
Mountain fold



Valley fold



Glue spot



Scoring

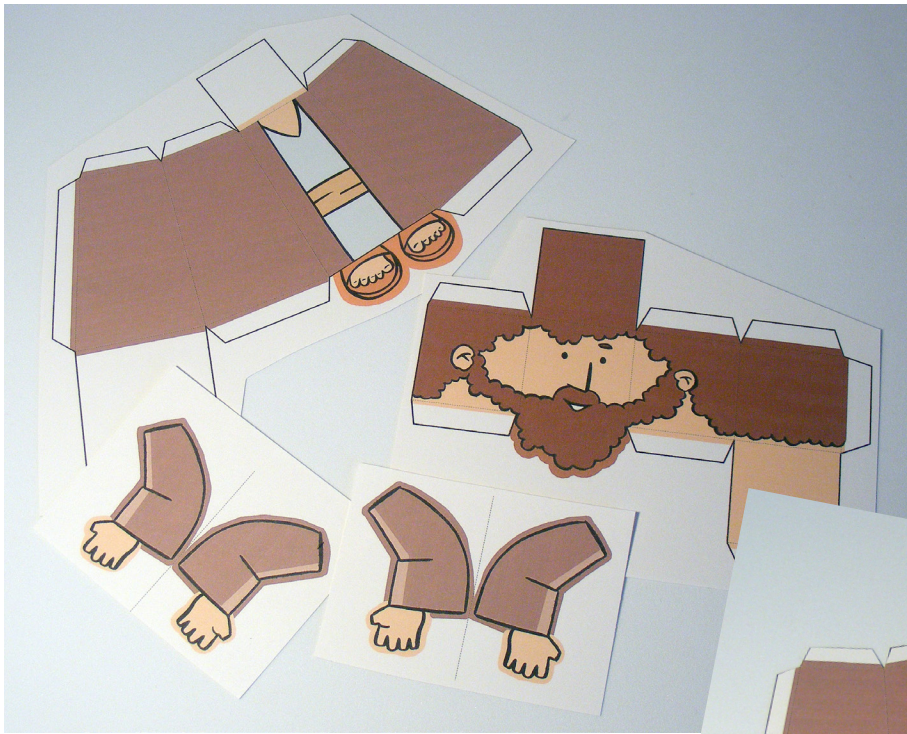
Score the fold lines to make a crisp straight fold. It's especially important for the smallest pieces to be scored before folding. To score, place a metal ruler along the fold line, and then press with a dull point along the fold line to compress the paper.

CAUTION

- **Be careful when using scissors or hobby knife.**
- **Glue, scissors, and other tools may be dangerous to young children so be sure to keep them out of the reach of young children.**

Cutting

Usually, a part of a card model is cut in two stages. First, the part is separated from the rest of the parts by cutting roughly around it with scissors. Don't cut on the lines at this step. Once the part is separated, you can work on it without damaging other parts. Often, it's best to do the scoring and folding before proceeding to the fine cutting. With small parts and narrow tabs, it's easier to fold them neatly while there is still waste paper around the part.

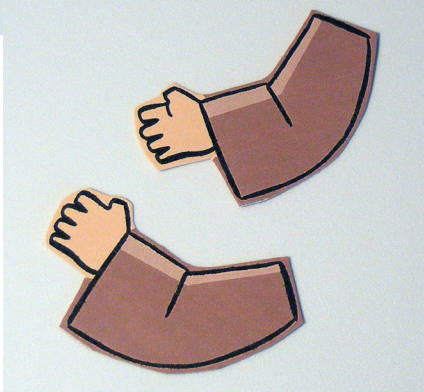
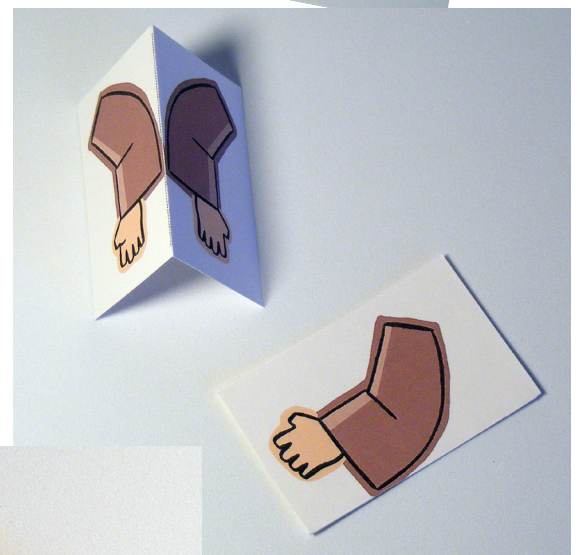
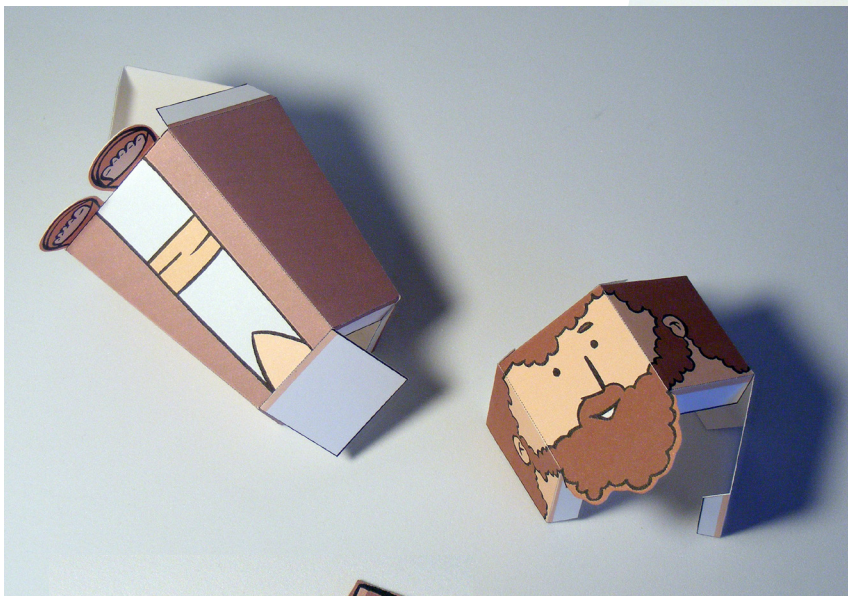
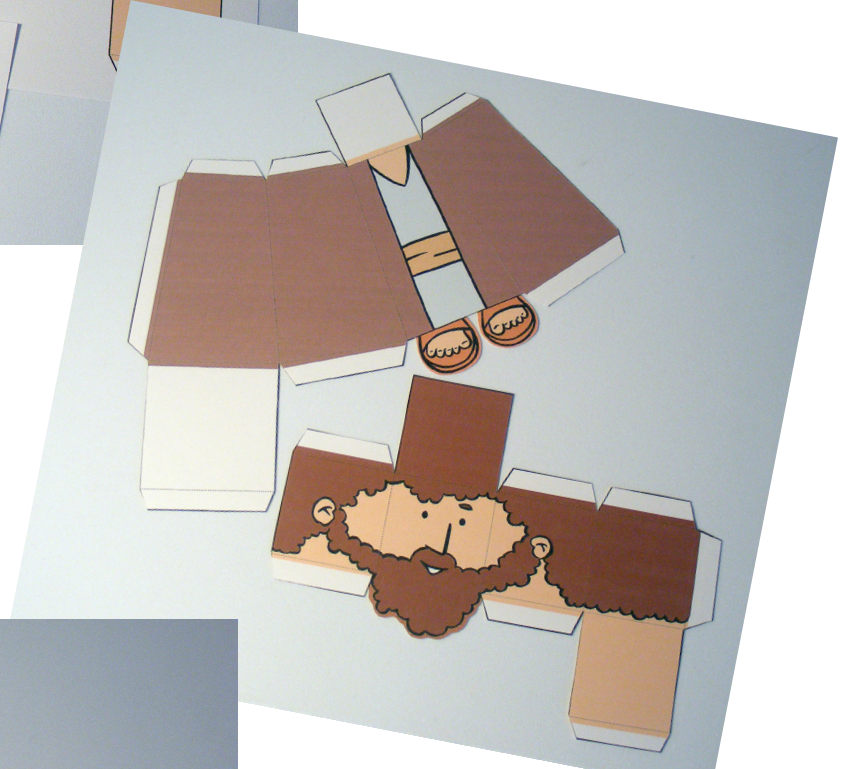


NOTE: These instructions apply to the basic shape of all the paper characters. Additional parts will be added to some models.

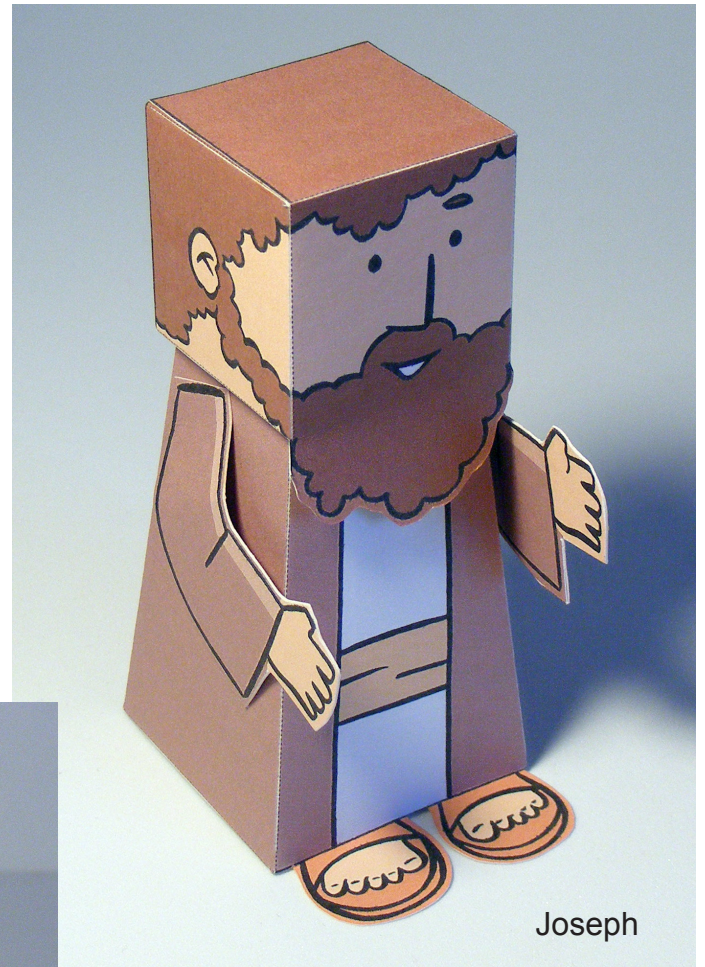
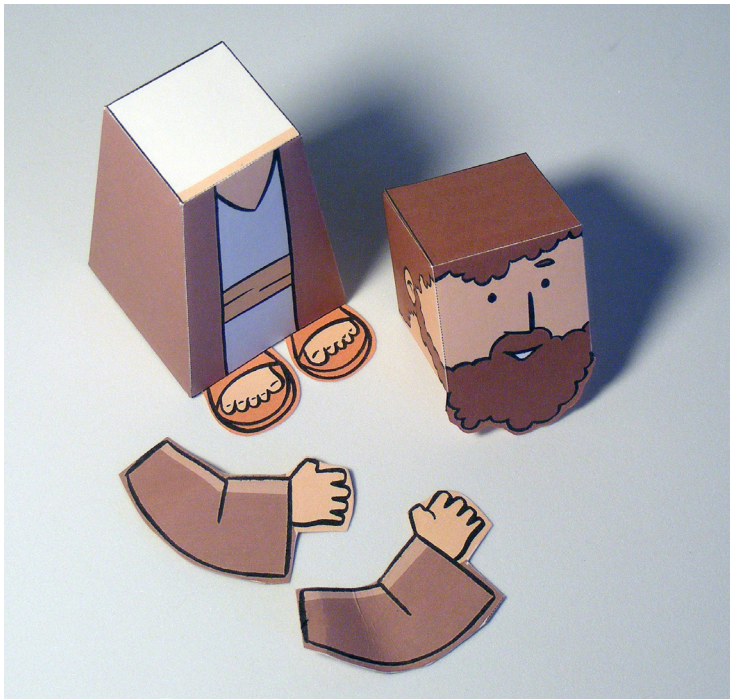
The formation of each part includes these basic steps:

- ♦ cutting out pieces
- ♦ scoring along dotted lines
- ♦ putting glue on tabs marked with a small black dot
- ♦ gluing the pieces together

Tip: When cutting around the feet or arms or other similar parts of other figures (the leaves of the palm tree for example), you don't necessarily have to cut right on the black line. You can cut a milimeter or two from it outside in the colored area.



Fold slightly on the arm before gluing to give a small effect.



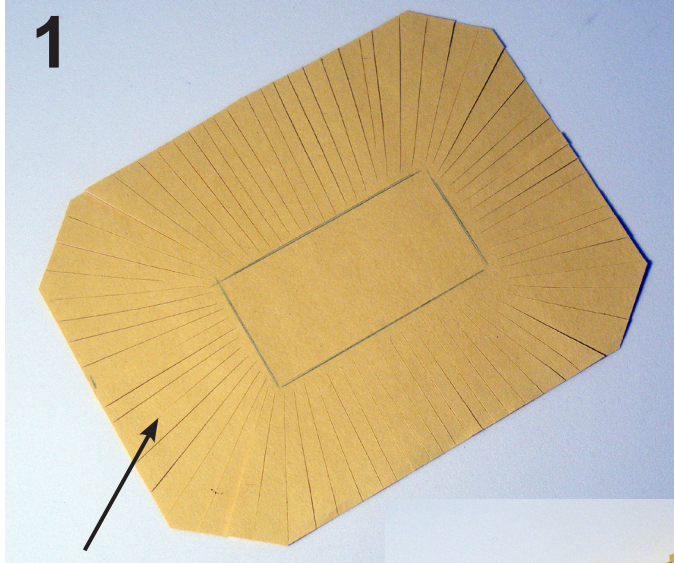
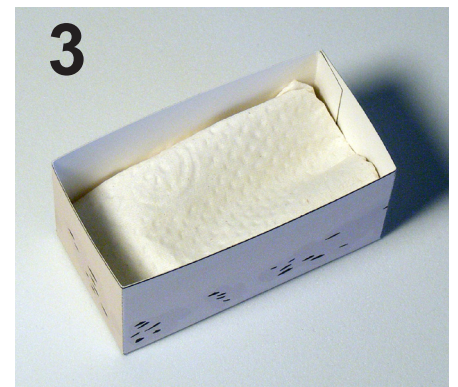
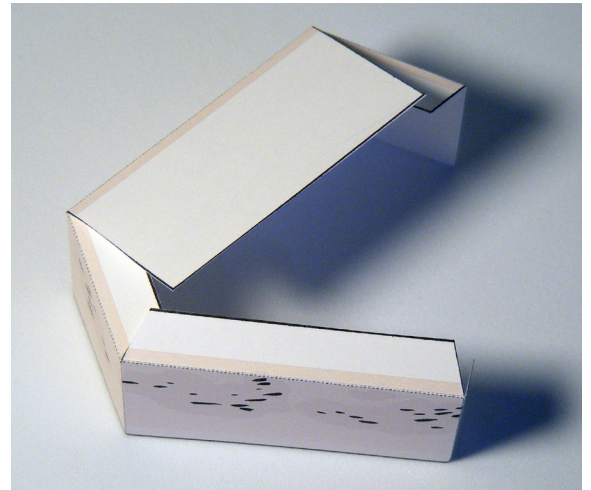
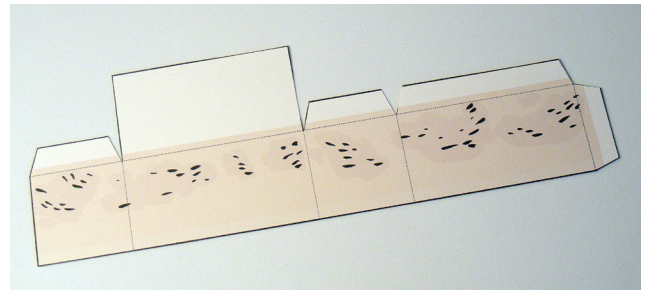
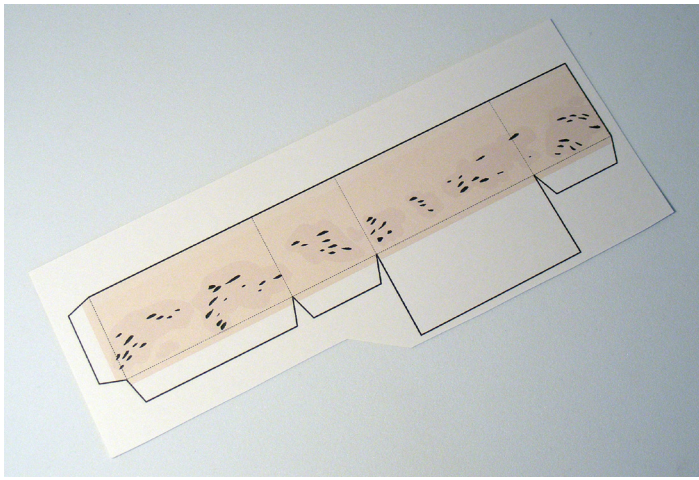
Joseph



Archangel Gabriel

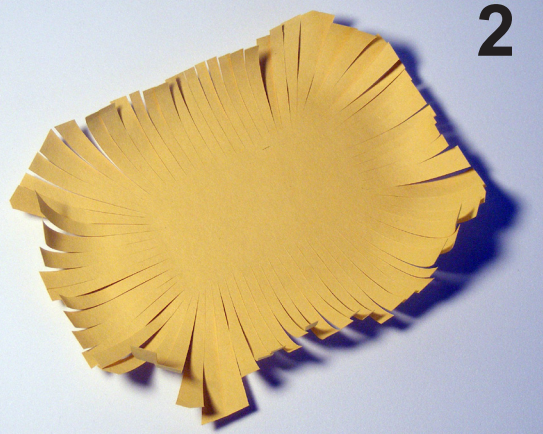


Mary



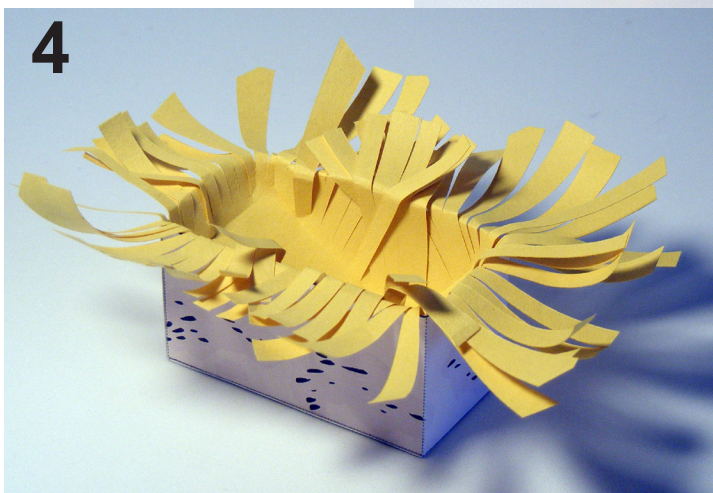
1
Cut a small piece of yellow paper about 15 cm by 12 cm and cut around as shown in the picture above.

Curl the small strips of paper.



2

3
Place a small piece of tissue inside the box before adding the hay part.



4

Then trim around the strip of paper.

Bible Paper Toys

The Nativity Story - Book 1

Included in this book:

- Archangel Gabriel
- Joseph
- Mary
- Baby Jesus
- the manger

