

# BIBLE

## Paper Toys



The Nativity Story  
Book 2  
**The Nativity House**

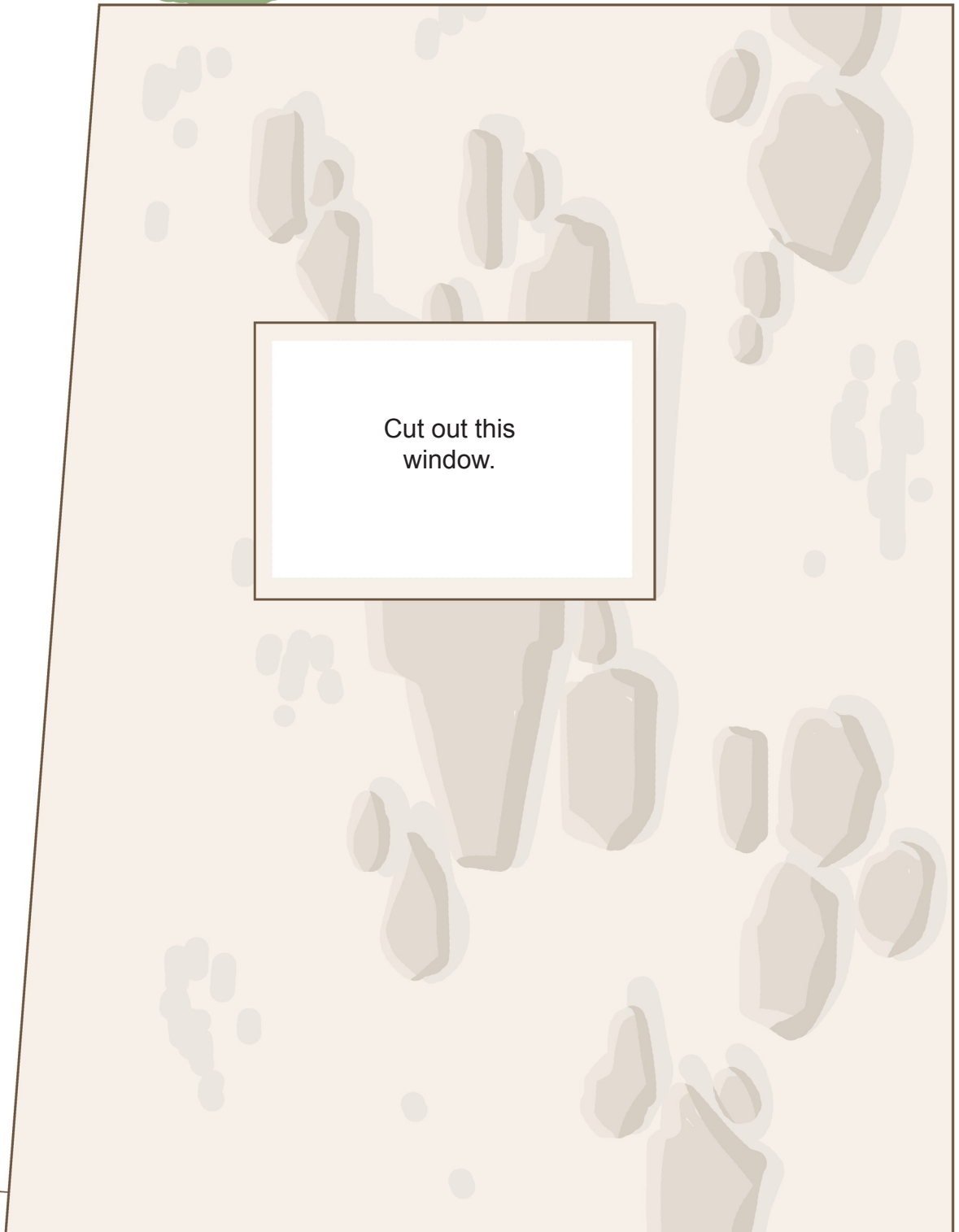
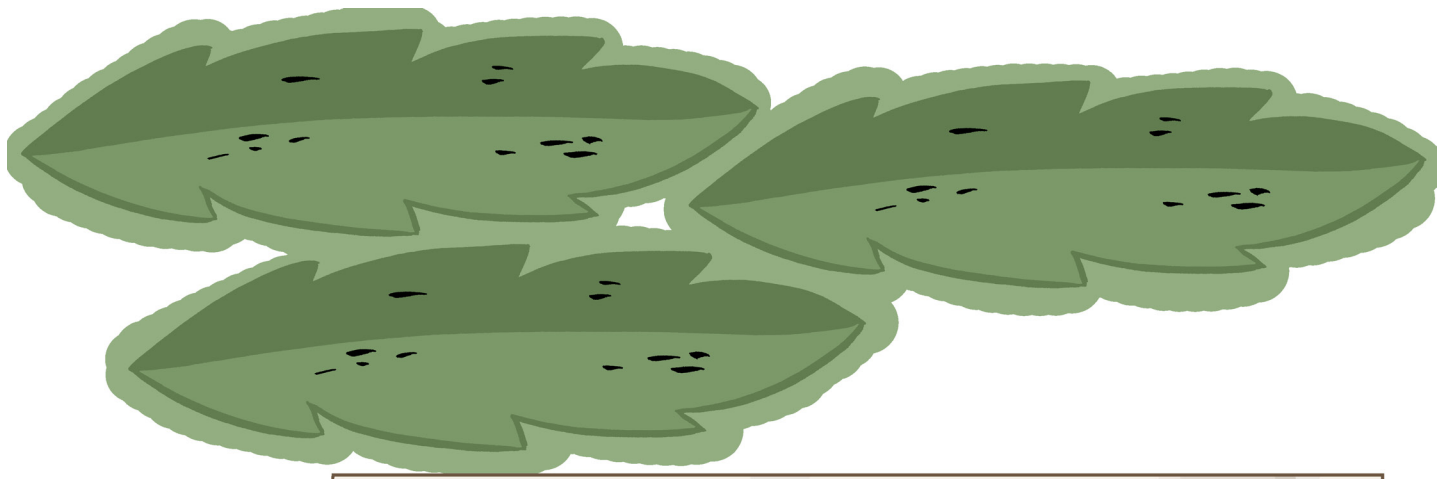
# **Bible Paper Toys**

## **The Nativity Story**

You can read the story of the  
first Christmas in  
Matthew 1:18–25, 2:1–11 and  
Luke 1:26–38, 2:1–20.

Model designed by Didier Martin.  
Copyright © 2010 by Didier Martin  
<http://jacques-mylittlehouse.blogspot.com/>



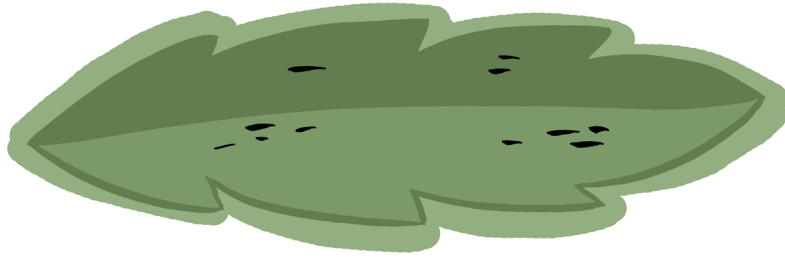
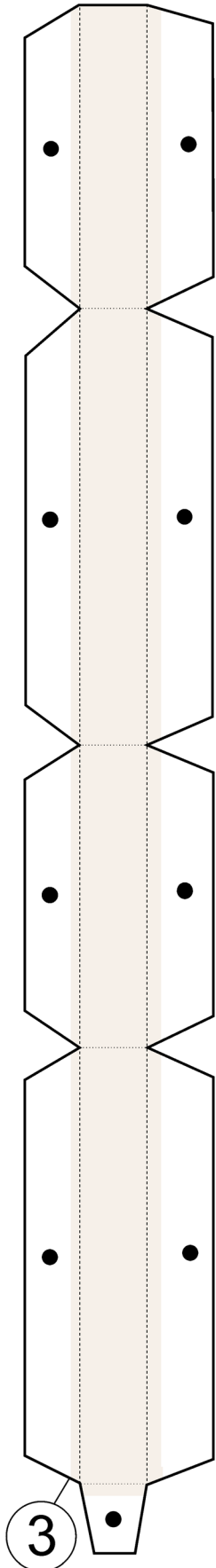


2

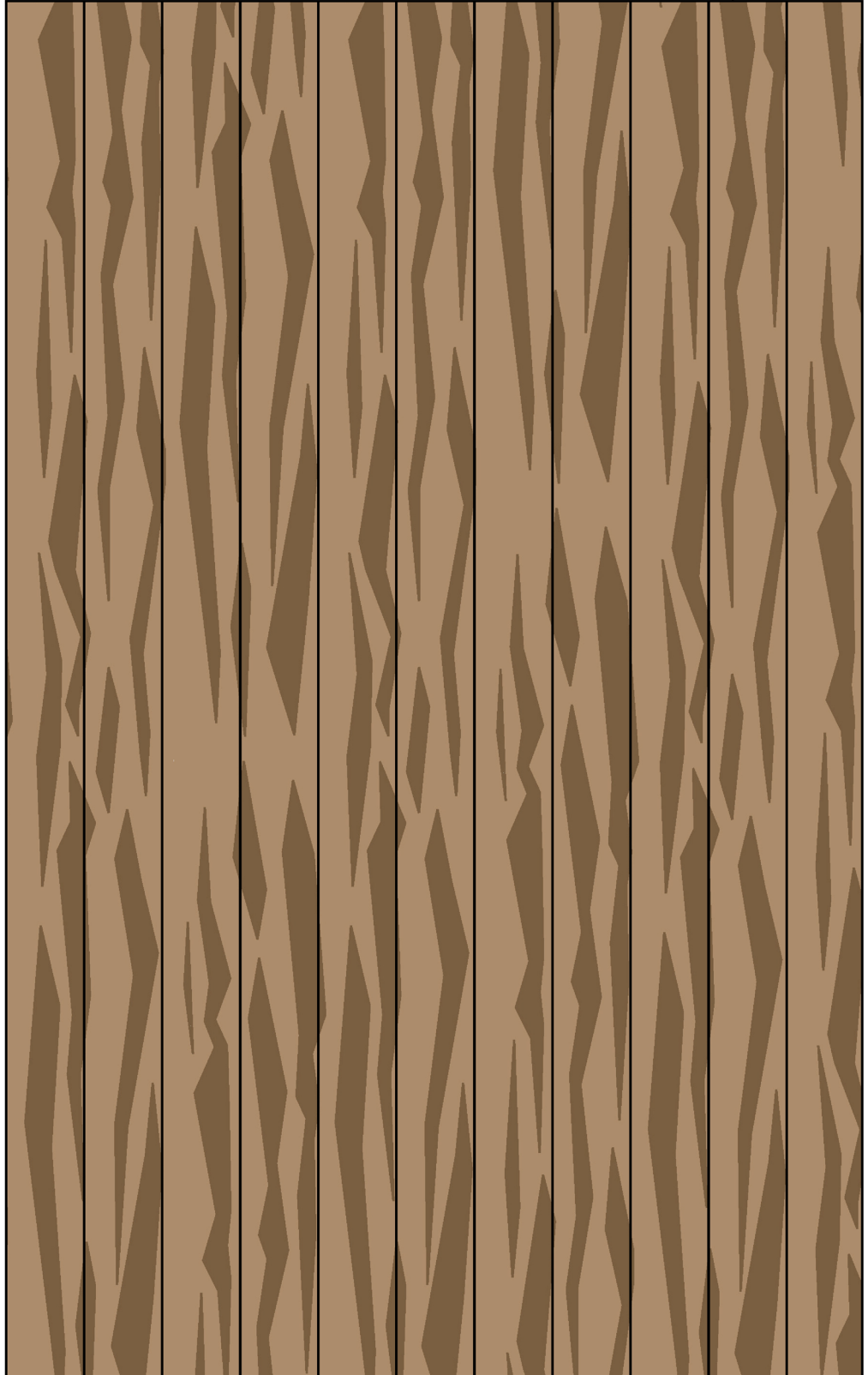
right wall



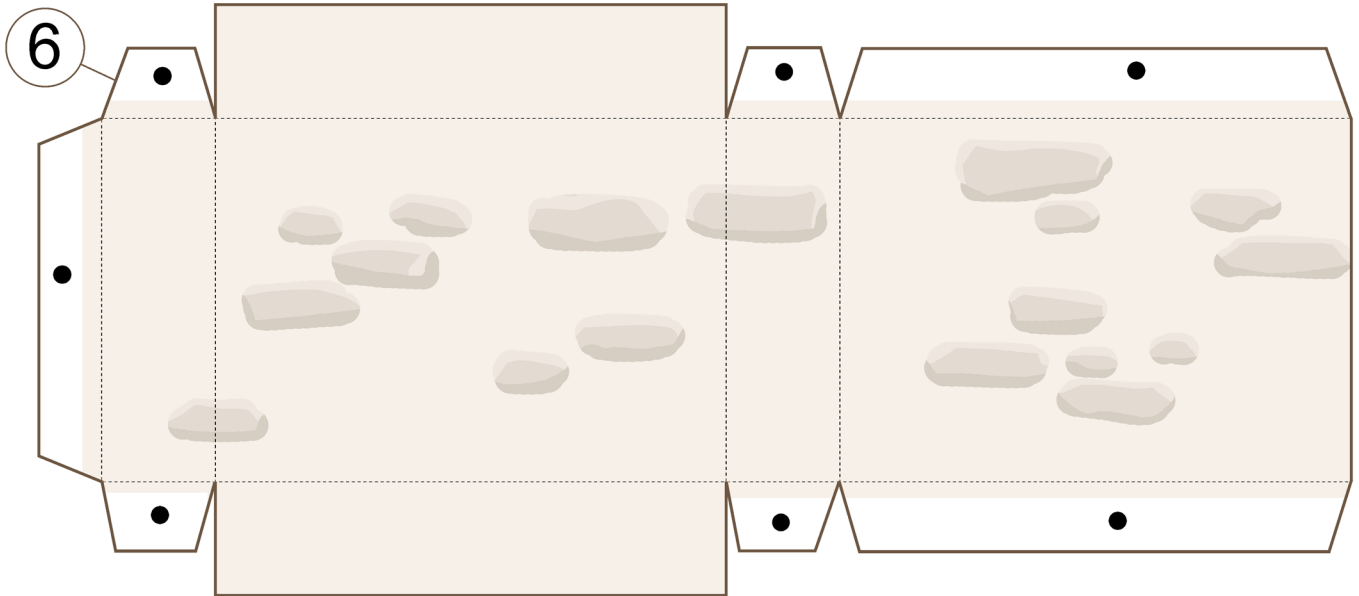
window



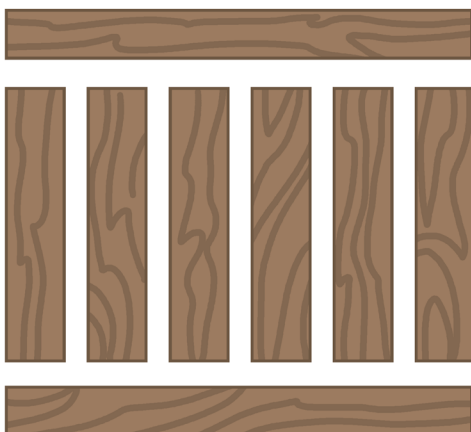
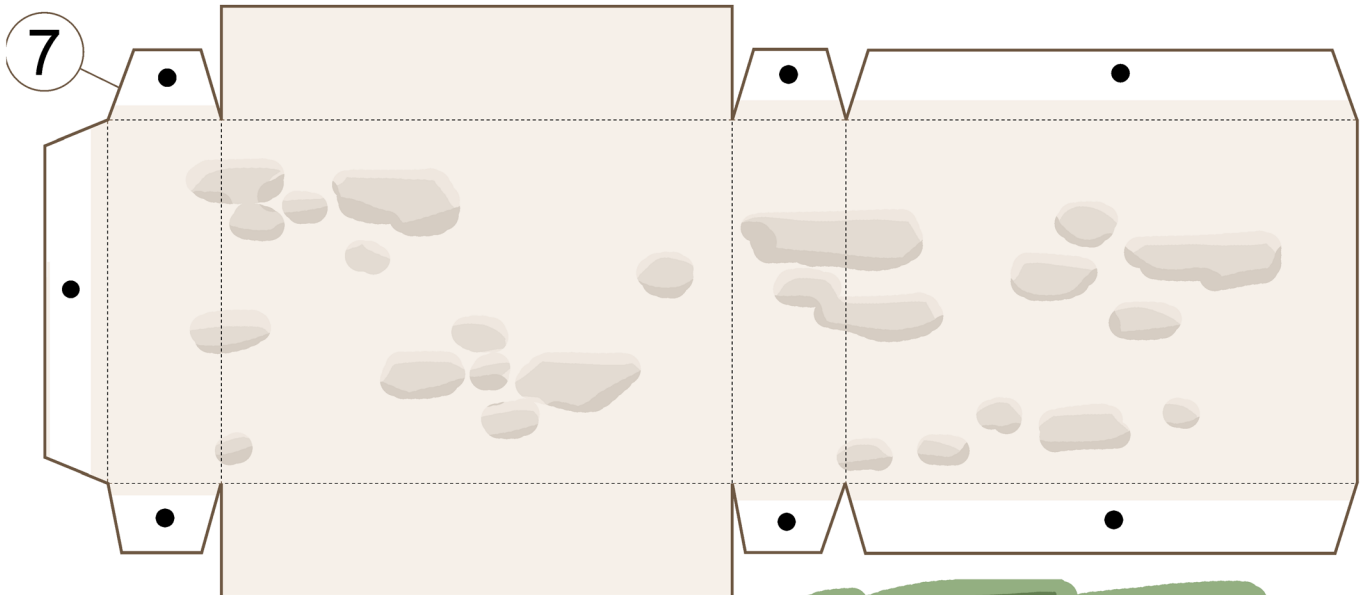
13



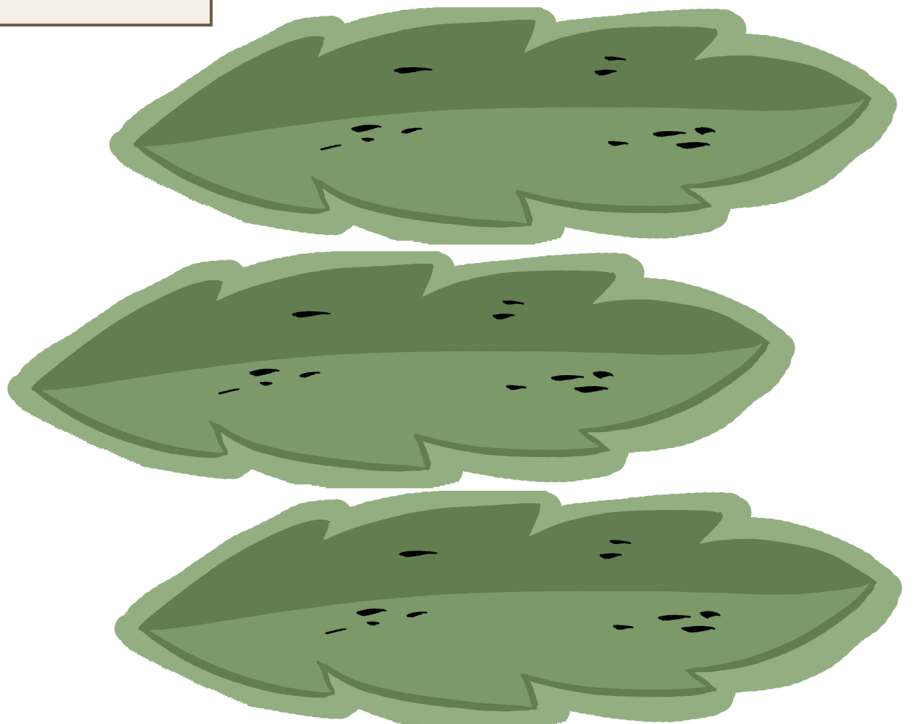
covering for the roof

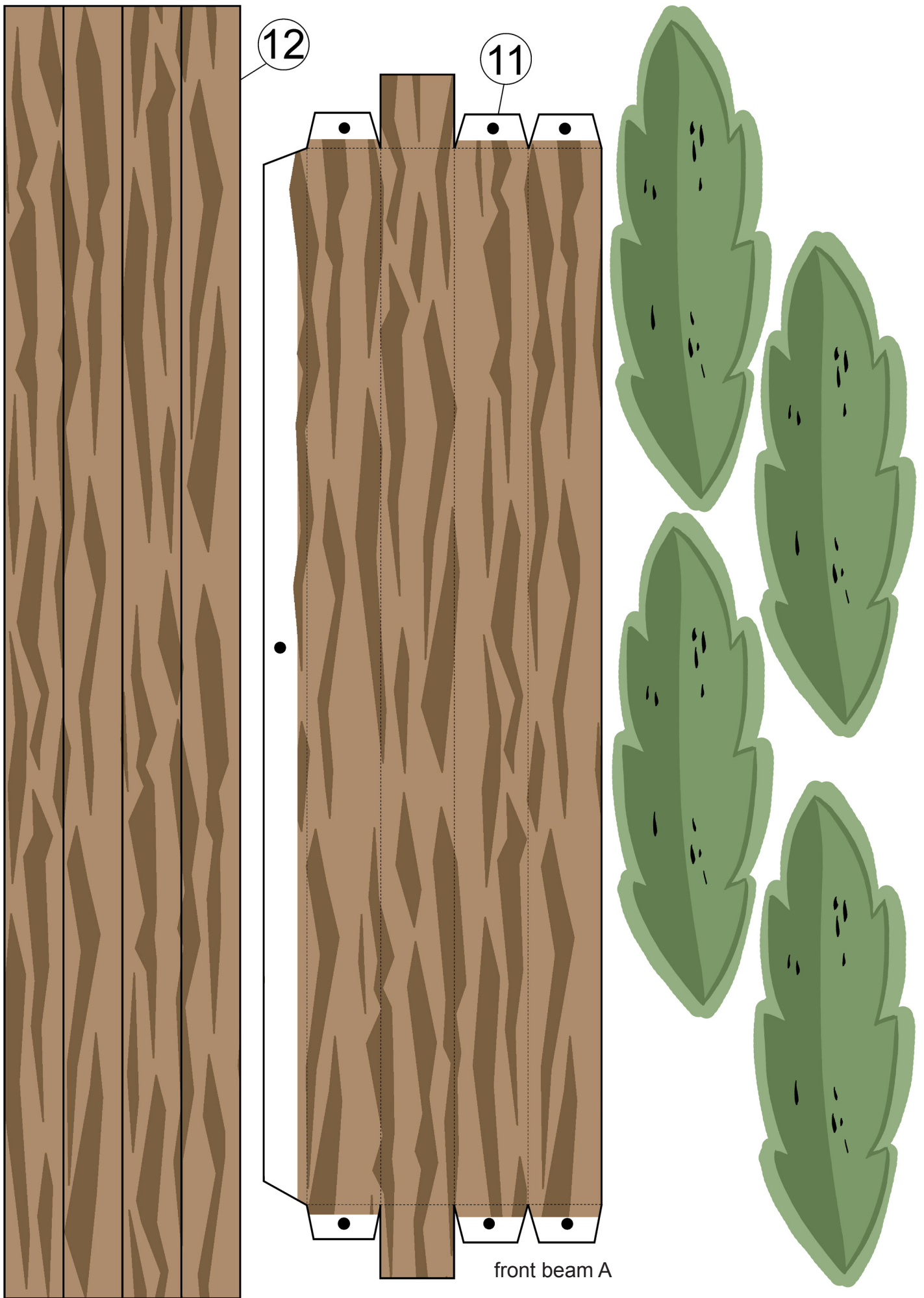


small wall left



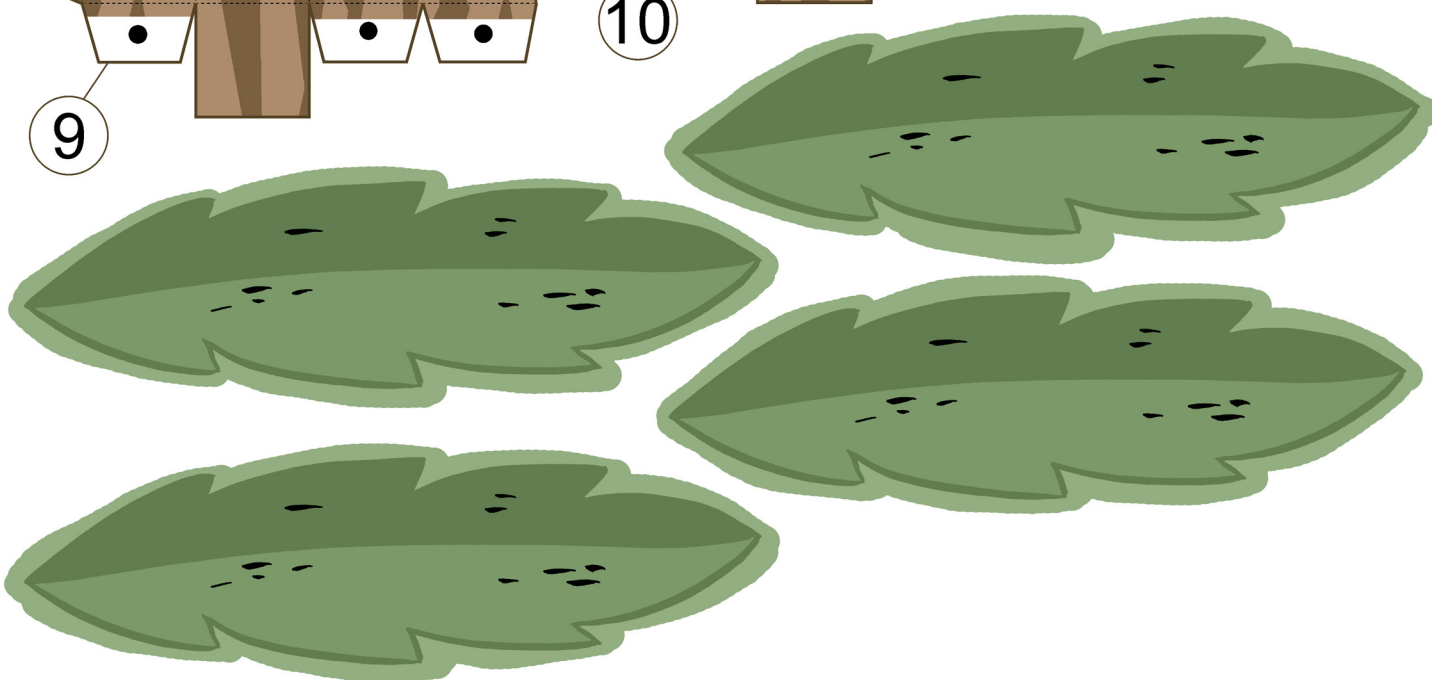
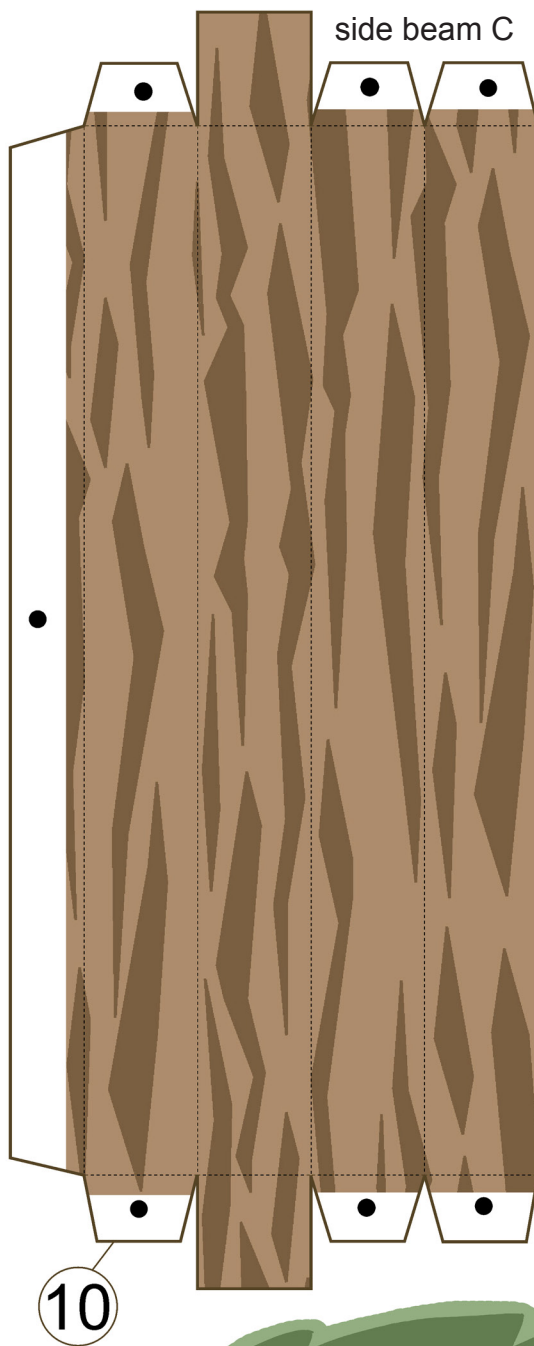
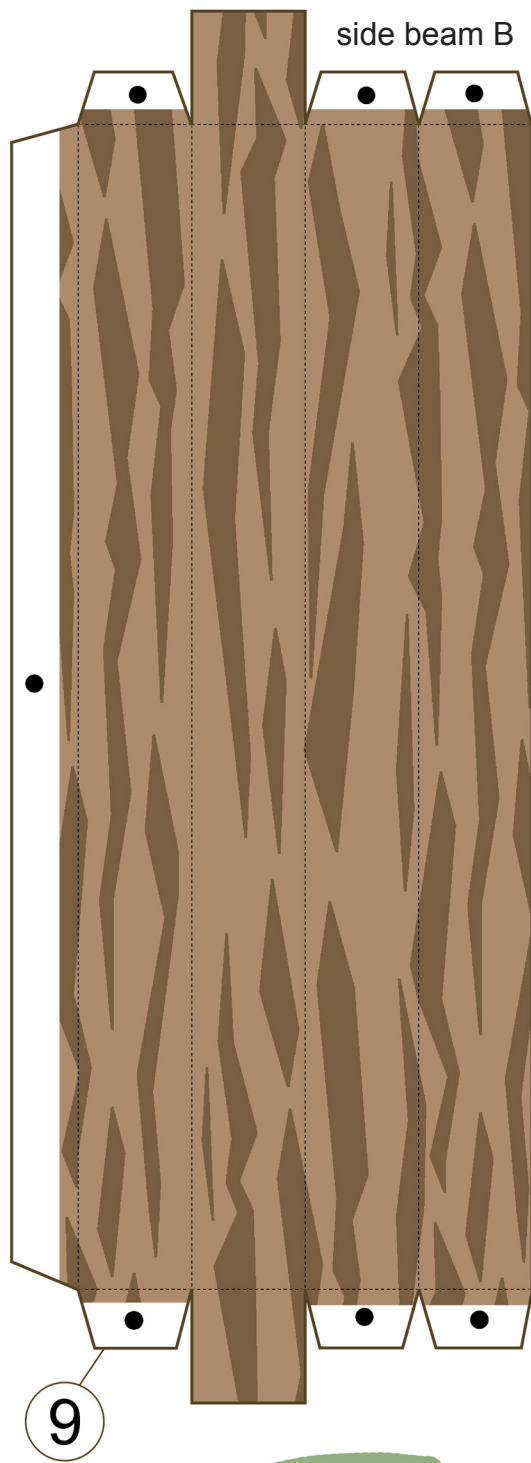
small gate left



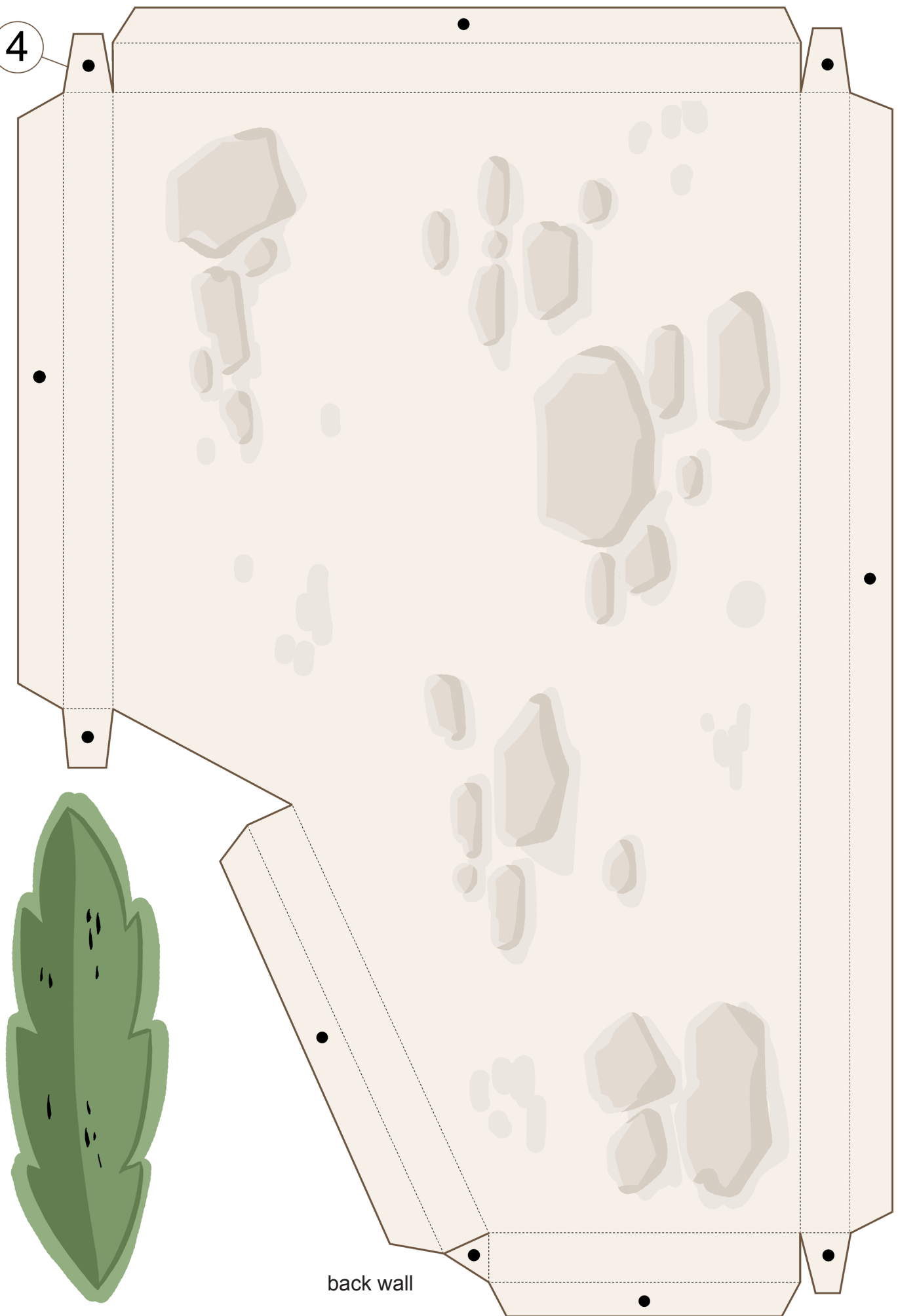


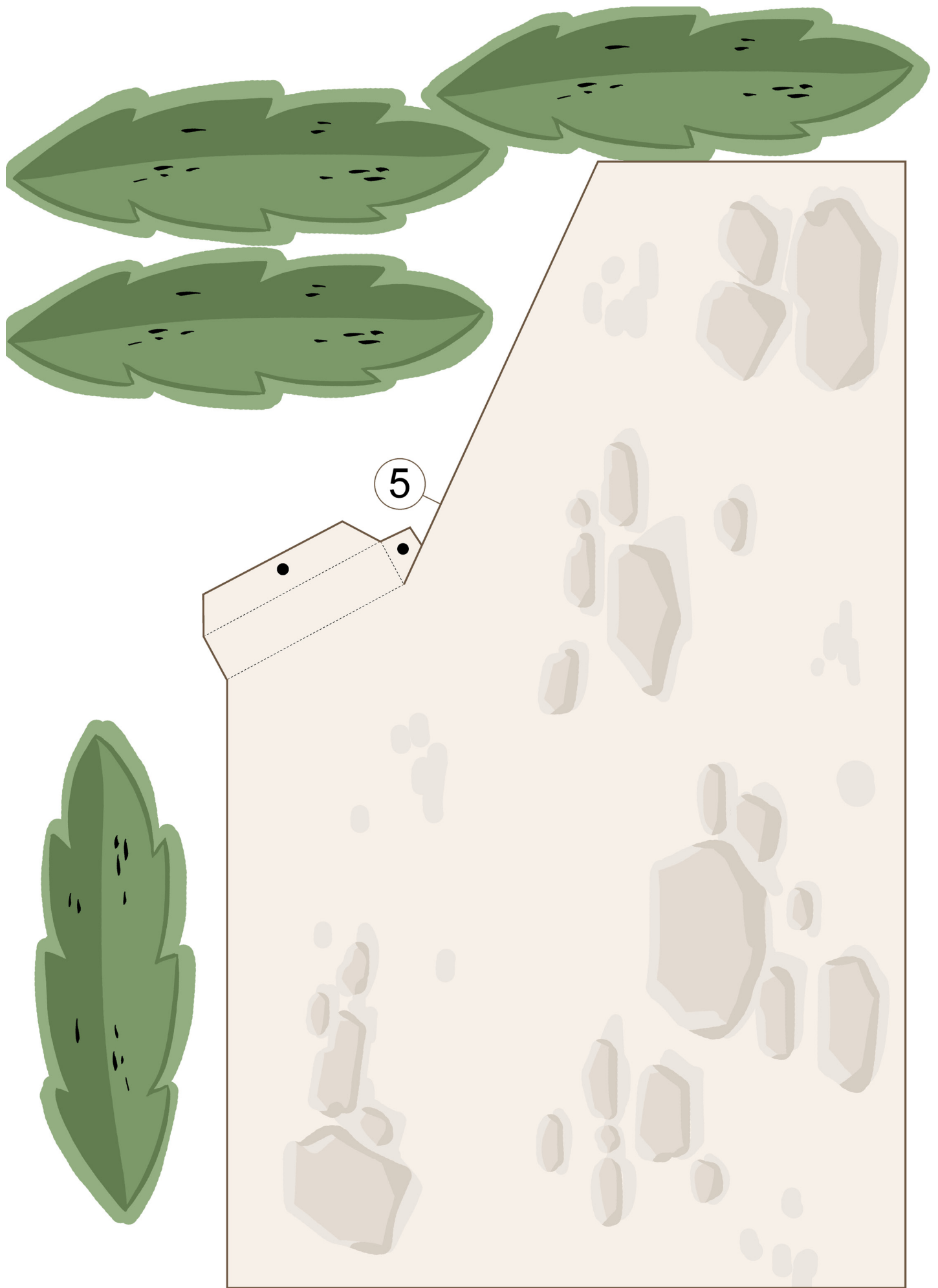
covering for the roof

front beam A



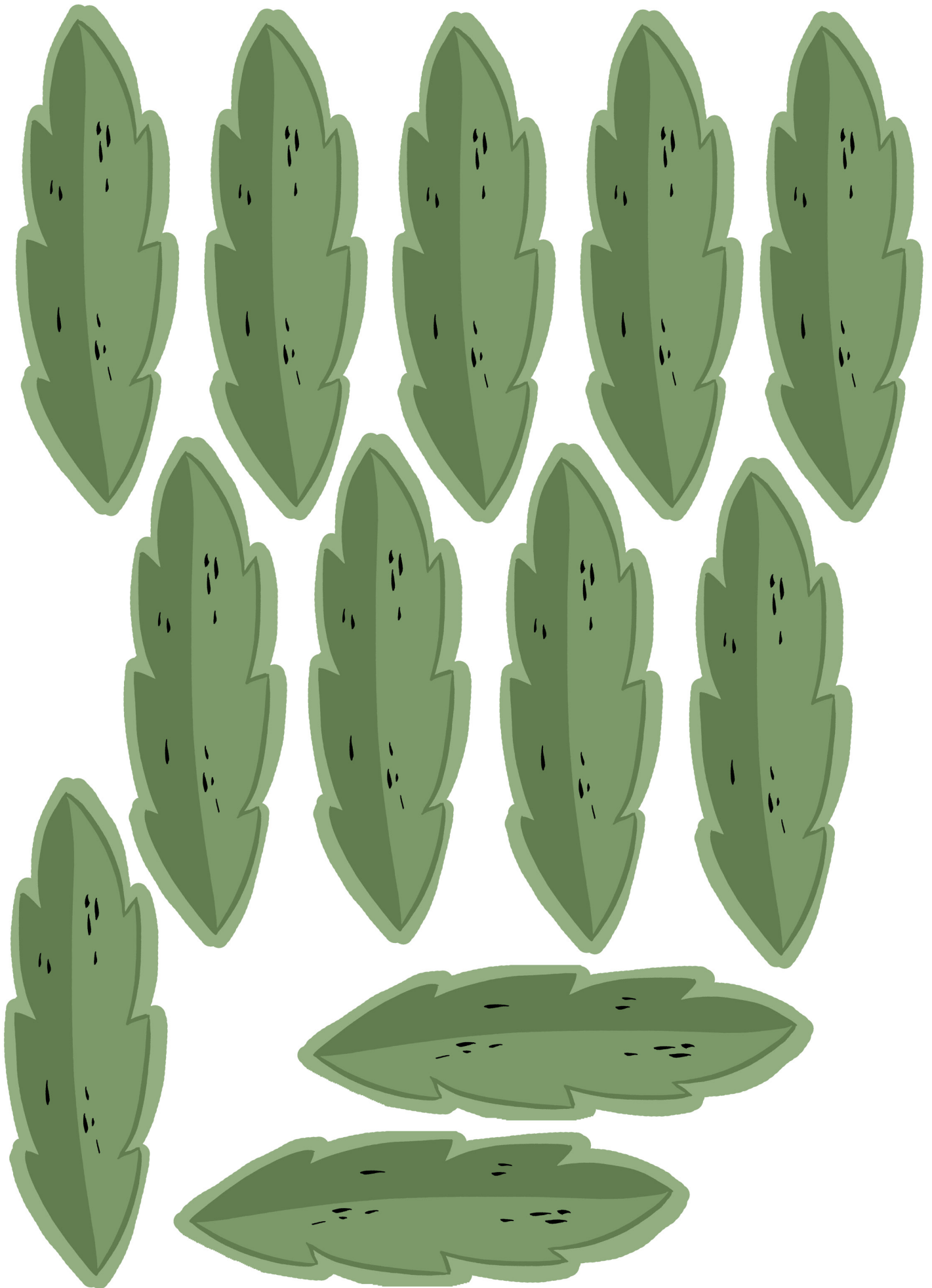
4





back wall





# ASSEMBLY INSTRUCTIONS

Print pages 1 through 9 on cardstock and follow the assembly instructions. Take your time and make sure all the parts line up properly before gluing. Just like anything else, it takes practice to get each model exactly right. But you'll find that the more models you work on the easier they become.

## Tools needed

- Small scissors. Small craft or manicure scissors work best.
- Hobby knife. Put in a sharp new blade, such as *X-acto* #10 or #11 for best results.
- Sturdy tweezers. Tweezers with rough edges or teeth will mar the surface of the pieces, so find a set with smooth edges.
- Straightedge or ruler. Preferably a metal one, to guide your knife in making a straight cut or score.
- Toothpicks or blunt dental tools for reaching into tiny corners and spreading drops of glue.
- White glue.
- Cutting surface. You can use a self-healing cutting mat, but a piece of cardboard will also work fine.
- "Dead" pen (no more ink) or blunt knife for scoring.

**TIP: After cutting out the parts and folding the tabs, make sure the parts fit together before gluing them. Refer to the picture of the final model to see how the different parts fit together.**



Cut lines



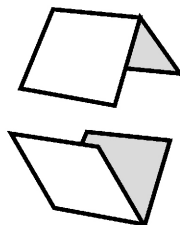
Mountain fold



Valley fold



Glue spot



## Scoring

Score the fold lines to make a crisp straight fold. It's especially important for the smallest pieces to be scored before folding. To score, place a metal ruler along the fold line, and then press with a dull point along the fold line to compress the paper.

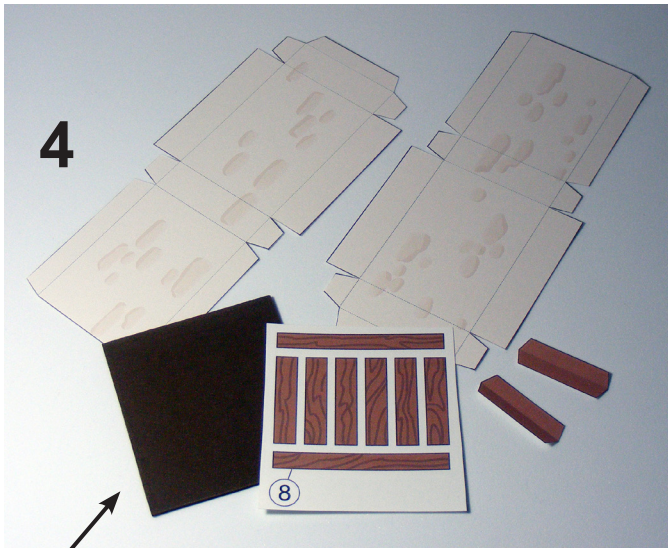
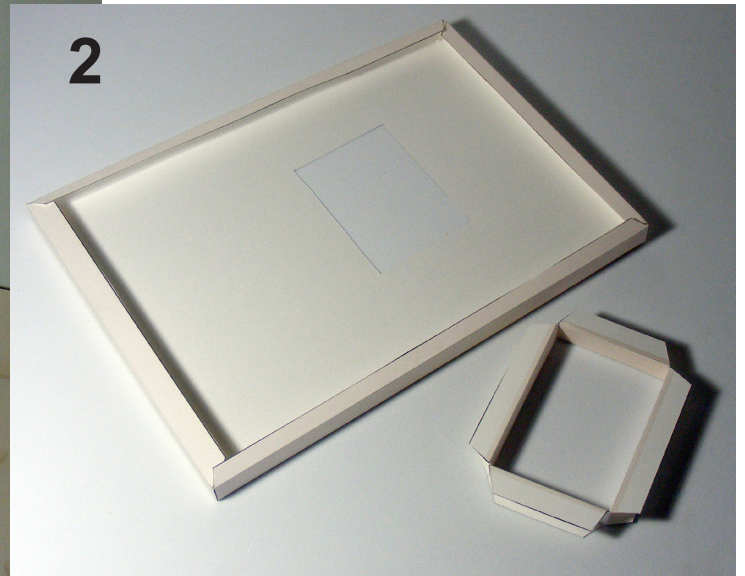
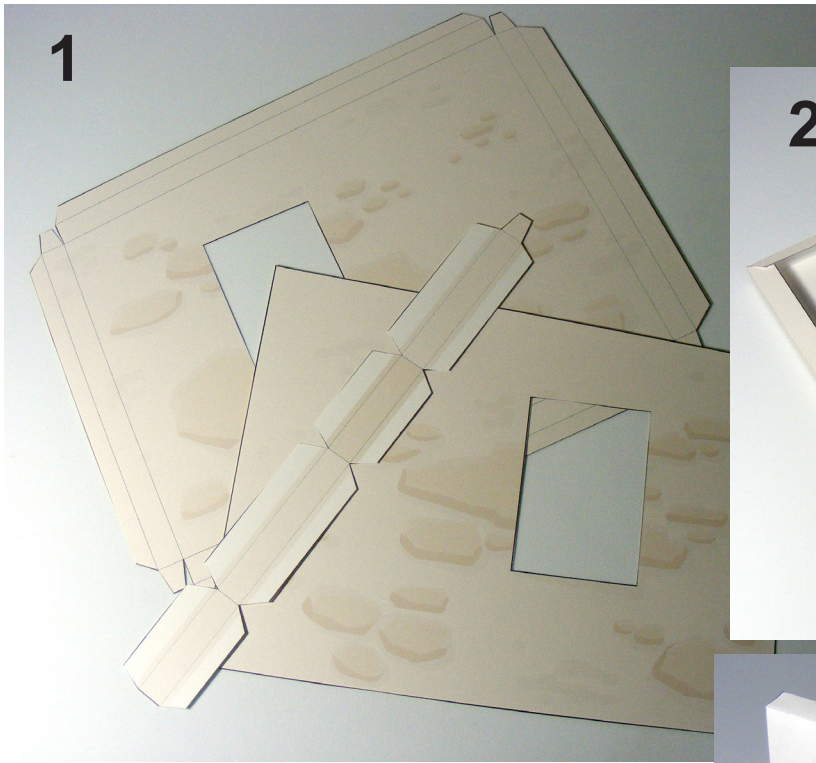
## CAUTION

- **Be careful when using scissors or hobby knife.**
- **Glue, scissors, and other tools may be dangerous to young children so be sure to keep them out of the reach of young children.**

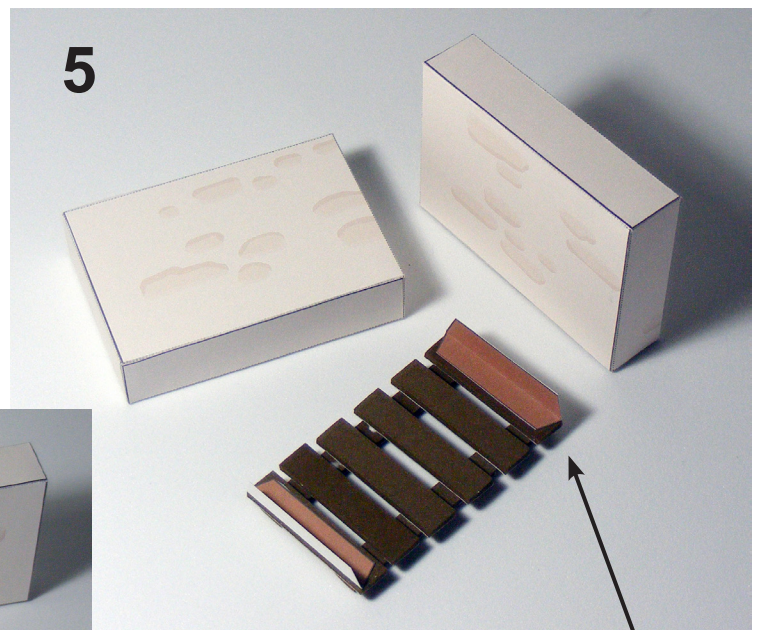
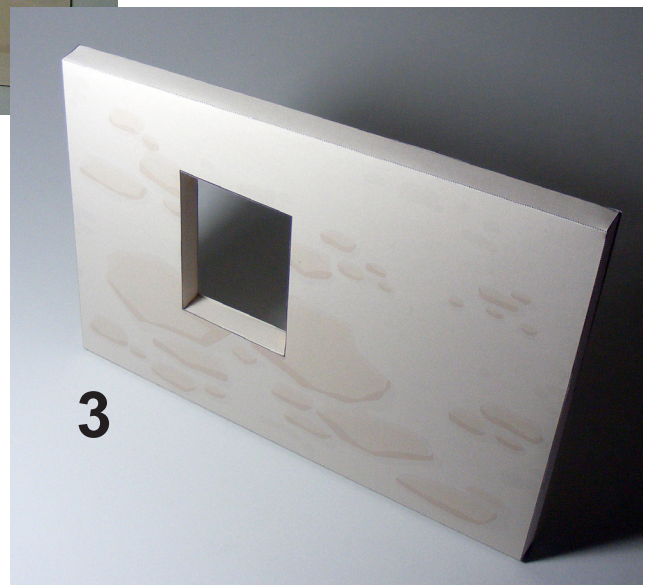
## Cutting

Usually, a part of a card model is cut in two stages. First, the part is separated from the rest of the parts by cutting roughly around it with scissors. Don't cut on the lines at this step. Once the part is separated, you can work on it without damaging other parts. Often, it's best to do the scoring and folding before proceeding to the fine cutting. With small parts and narrow tabs, it's easier to fold them neatly while there is still waste paper around the part.

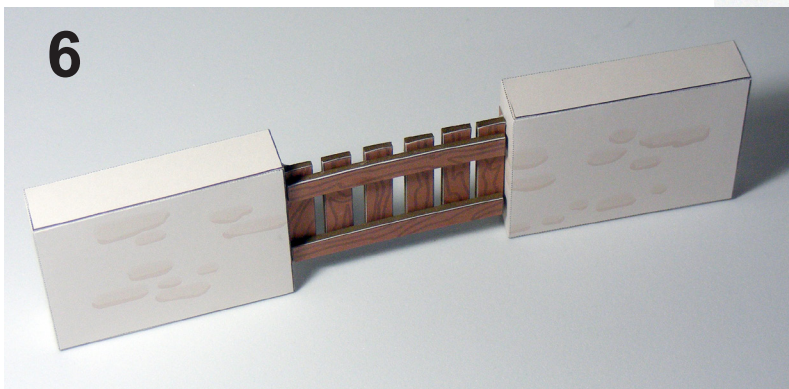




Optional: You can glue a small piece of brown foam or cardboard behind the fence in order to add thickness to the fence.

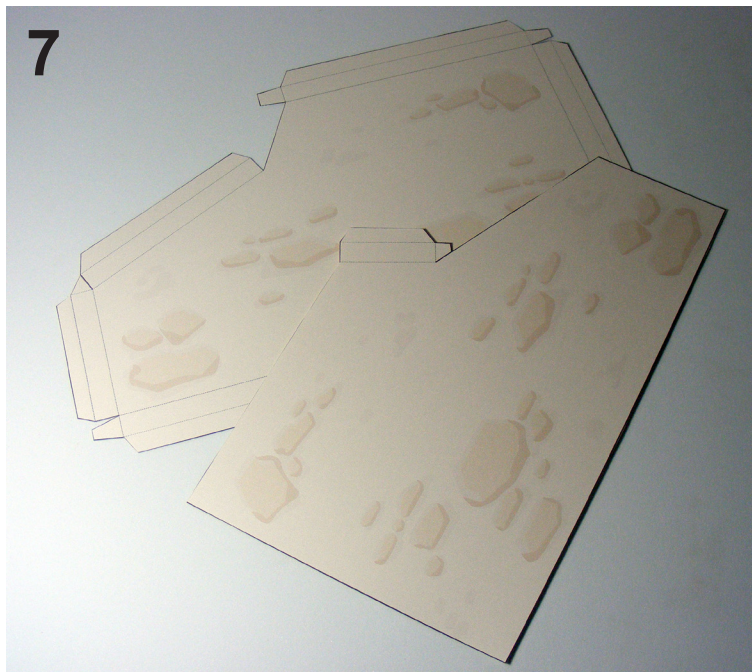


small corner to attach the fence between the 2 walls



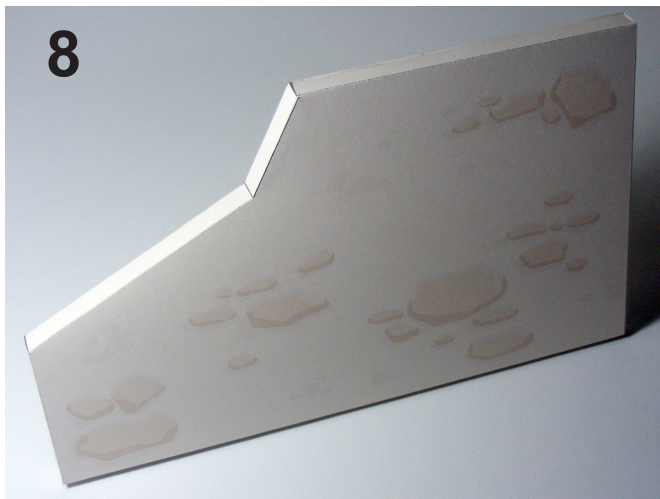


7

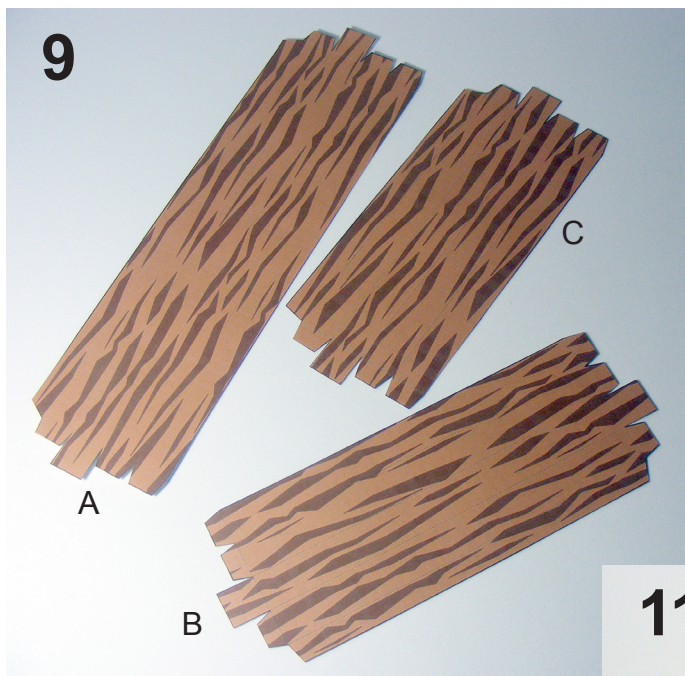


This wall is a little more complex to assemble. Take your time and try out the parts before gluing to see how they fit together.

8

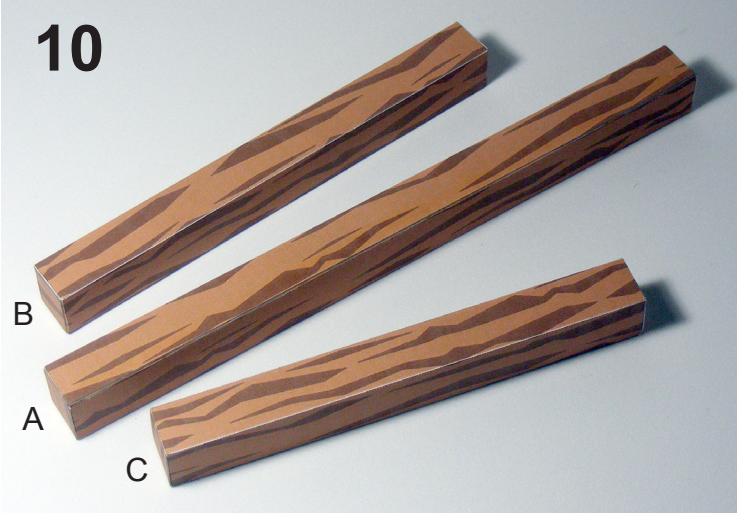


9

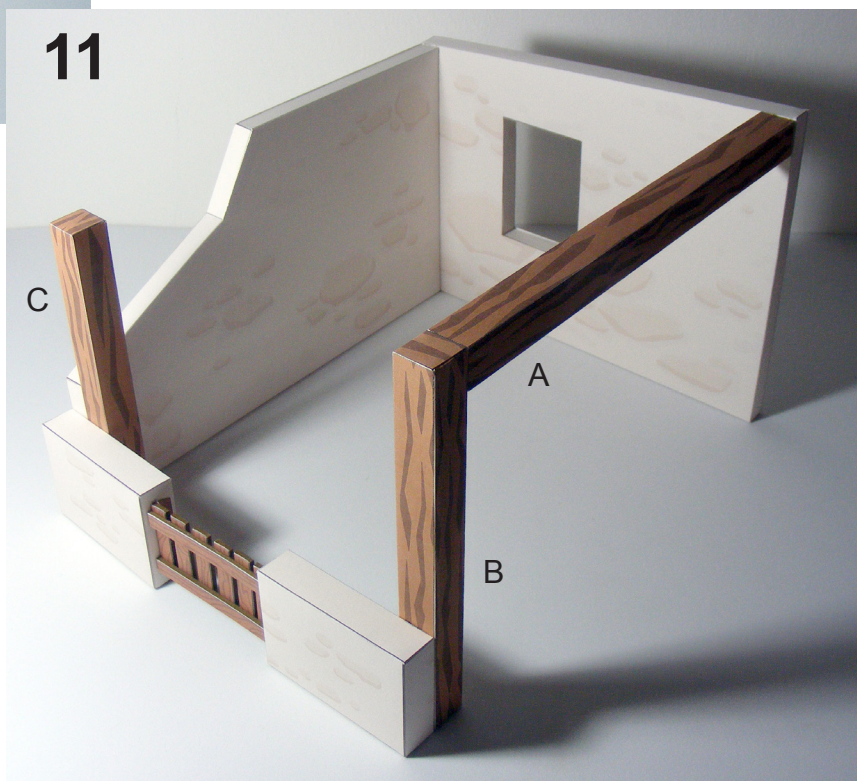


beams

10

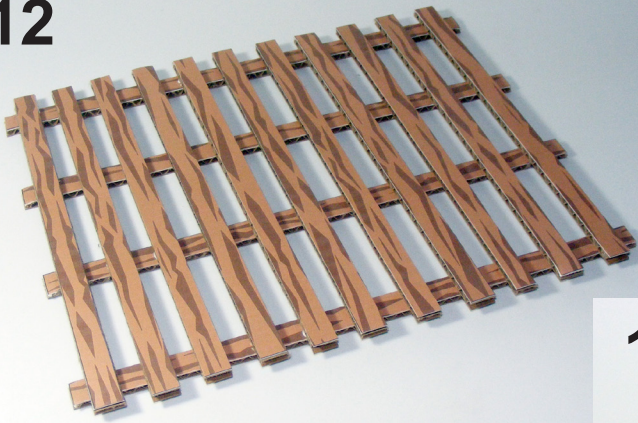


11





12

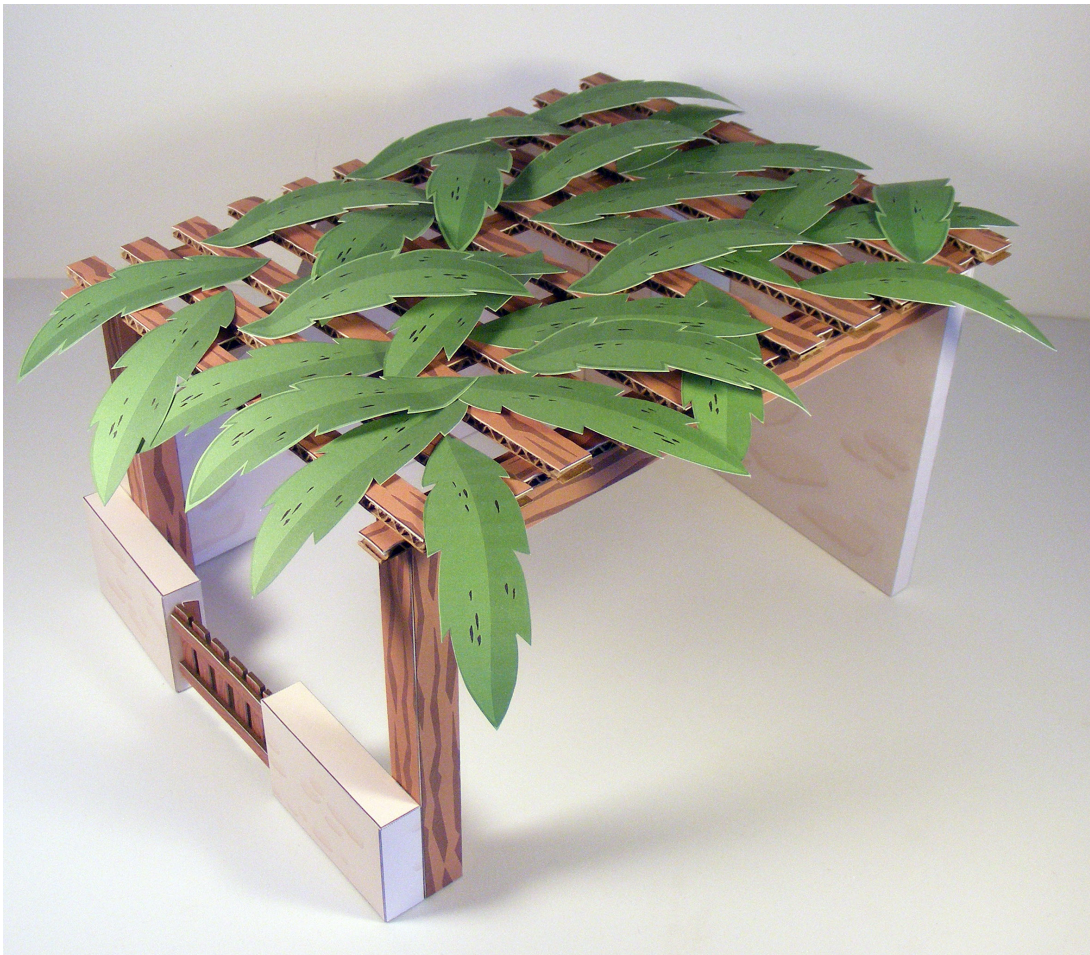


**Optional:** Before cutting these roofing beams you may glue them onto a piece of brown foam or cardboard to give an extra thickness.

13



Then cut out the leaves and glue them over the beams of the roof.



# Bible Paper Toys

## The Nativity Story - Book 2

Included in this book:

- Nativity house parts

